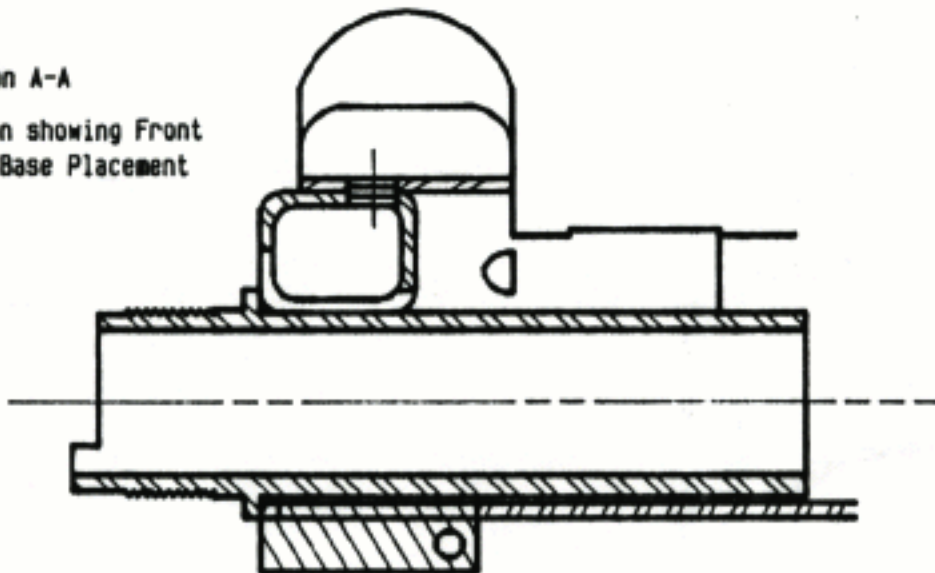
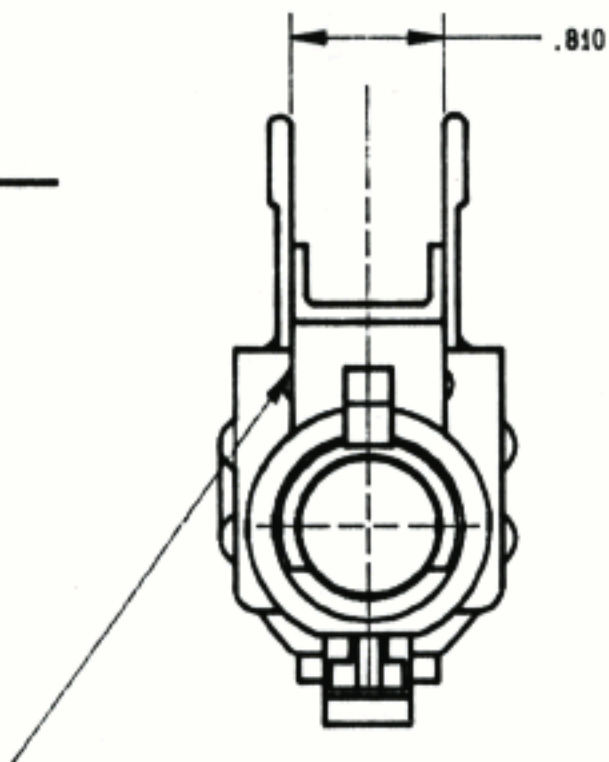


Section A-A  
Section showing Front  
Sight Base Placement

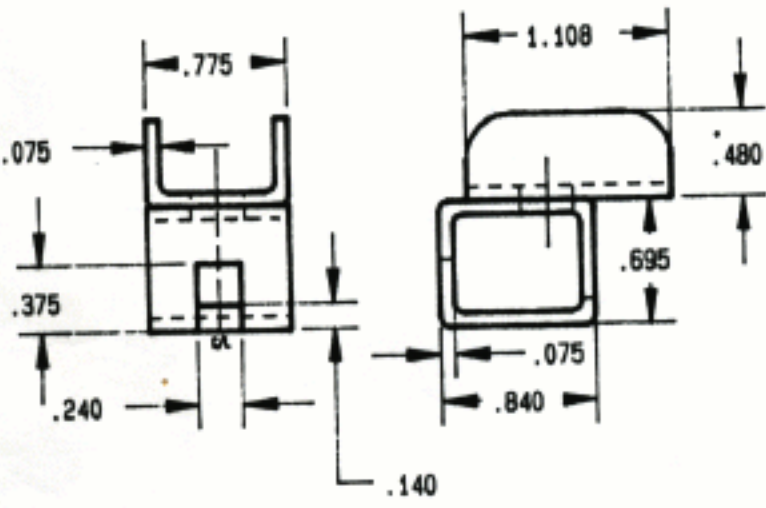


FRONT VIEW

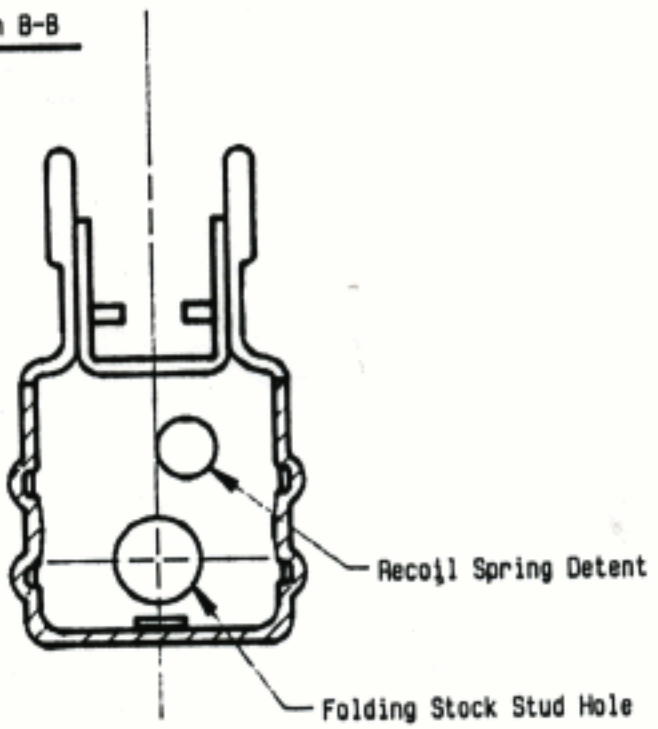


Weld and Grind smooth to .125 radius both sides

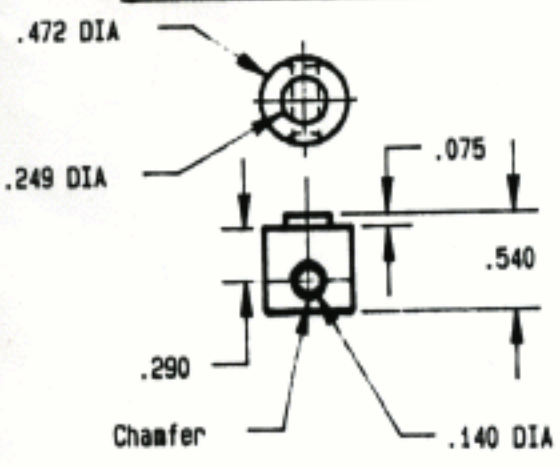
FRONT SIGHT BASE



Section B-B

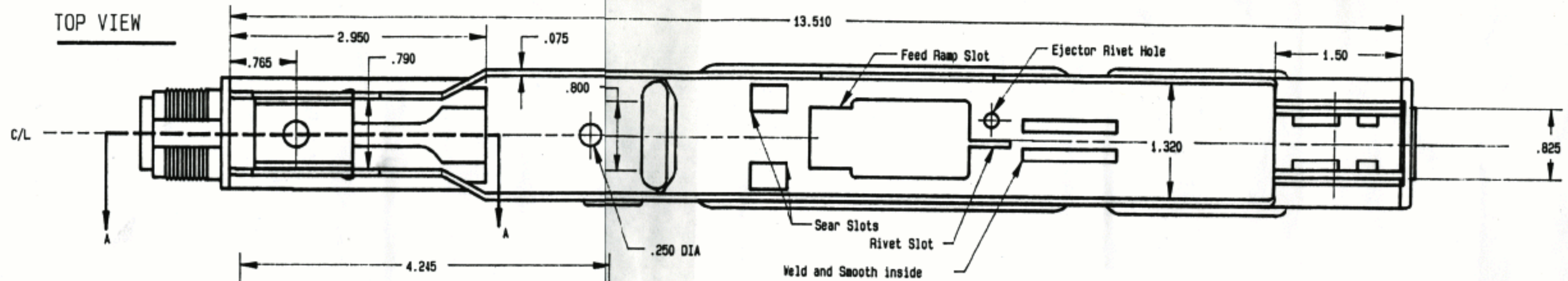


FRONT GRIP LUG

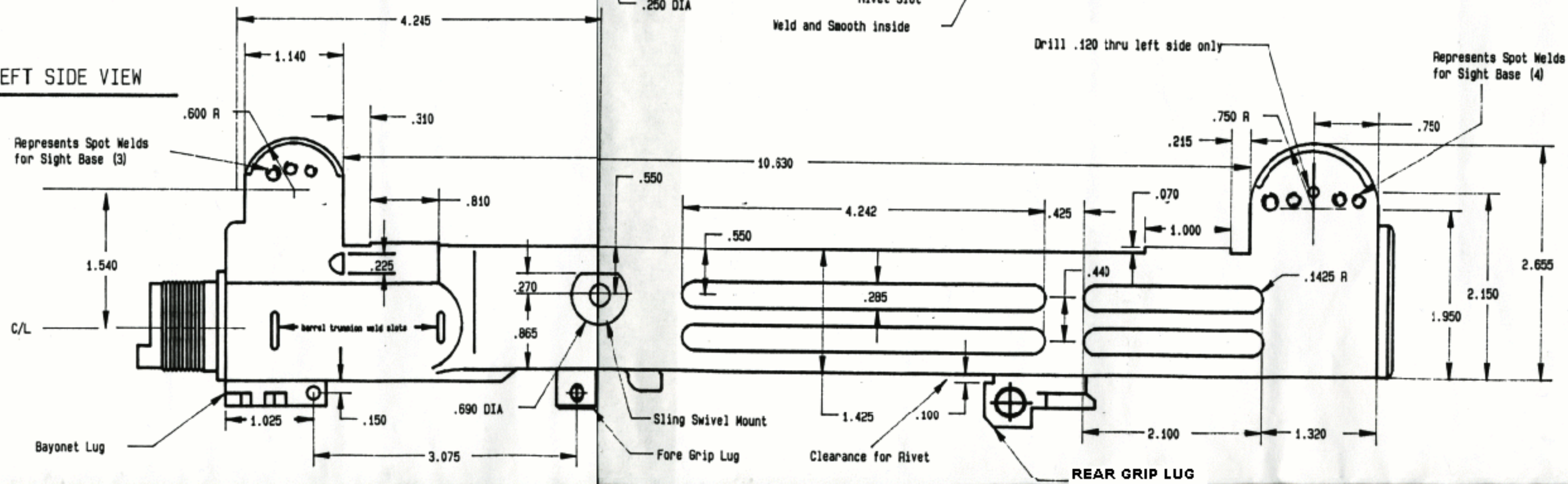




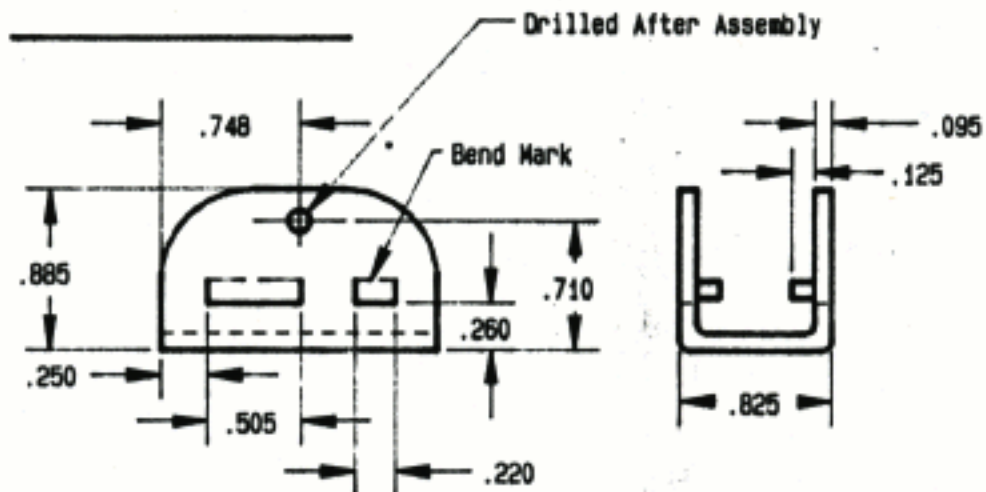
TOP VIEW



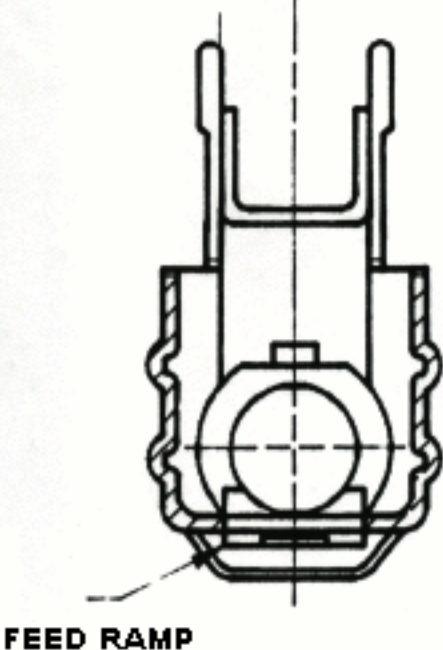
LEFT SIDE VIEW



REAR SIGHT BASE



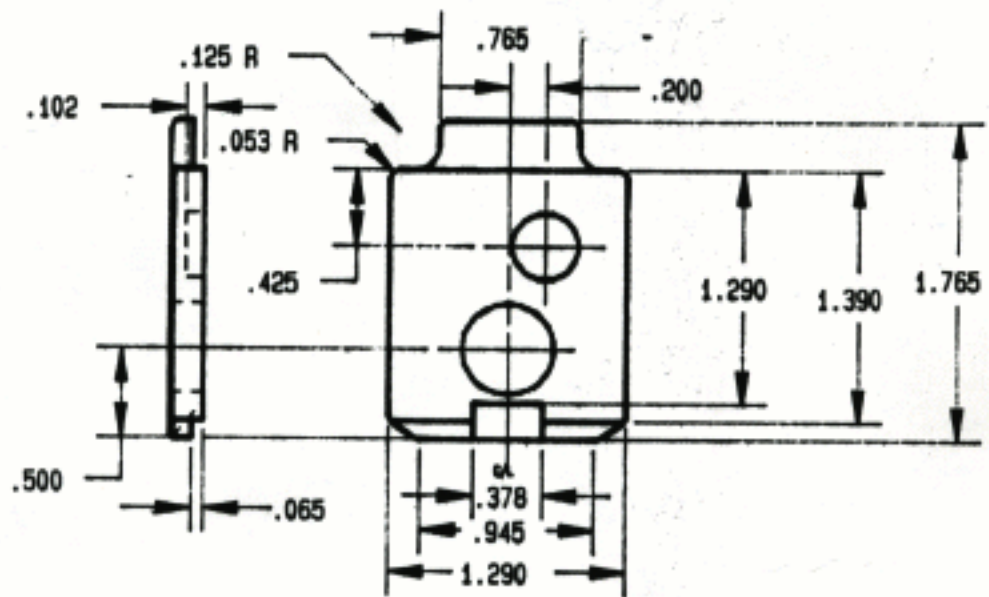
Section C-C



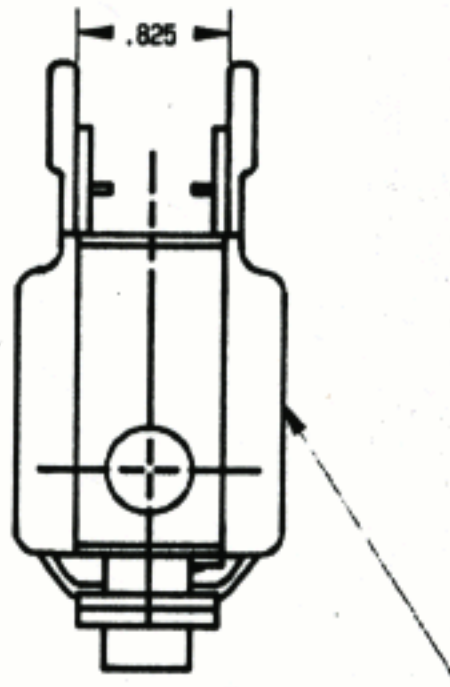
*UZI SMG RECEIVER*

<b>TOLERANCES:</b> .X    ± .5 .X X   ± .10 .XXX ± .010 ANGLES ± 0.5 Degrees		<b>MATERIAL:</b> 1018 MILD STEEL STAMPING	
		<b>SIZE</b> D	<b>FINISH:</b> PARKERIZE
		<b>SCALE:</b> 1:1	
<b>DO NOT SCALE DRAWING DIRECTLY</b>			

BACK PLATE



BACK VIEW



Weld and Grind smooth to .125 radius both sides

