



**SPECIAL SUPPLEMENT**

***WINCHESTER***<sup>®</sup>  
RIFLES AND SHOTGUNS Licensee

Winchester Model 70 Take-Down Rifle Supplement

## SPECIAL SUPPLEMENT

### Winchester Model 70 Classic Custom Take-Down Rifle

U.S. Repeating Arms Company, Inc.  
275 Winchester Ave.  
New Haven, CT, U. S. A. 06511-1970  
Custom Shop Phone: 1-203-789-5503

*Winchester trademarks licensed from Olin Corporation.*

Use the space below to record information about your Model 70 rifle.

Model \_\_\_\_\_ Caliber \_\_\_\_\_

Serial Number \_\_\_\_\_

Purchased From \_\_\_\_\_ Date \_\_\_\_\_

This precision shooting instrument has been made by the Winchester Custom Shop through a special partnership between U.S. Repeating Arms Company and H-S Precision. H-S Precision is famous for fine tuning and customizing to create rifles with superb accuracy. Your new Model 70 Take-down is no exception. It is one of the most unique, high-performance rifles ever.

## SPECIAL WARNINGS FOR THE TAKE-DOWN MODEL 70

***IT IS ESSENTIAL THAT THESE OPERATING INSTRUCTIONS AND THE INSTRUCTIONS / WARNINGS PROVIDED IN THE MODEL 70 OWNER'S MANUAL BE THOROUGHLY STUDIED BEFORE USING THIS FIREARM TO ASSURE PROPER AND SAFE GUN HANDLING. FAILURE TO FOLLOW THESE INSTRUCTIONS OR FAILURE TO OBEY ANY SAFETY WARNING MAY RESULT IN INJURY TO YOURSELF OR OTHERS, OR CAUSE DAMAGE TO YOUR GUN.***

***IF YOUR MODEL 70 OWNER'S MANUAL IS MISSING YOU MUST OBTAIN ONE FROM YOUR DEALER OR US BEFORE USING YOUR NEW RIFLE.***

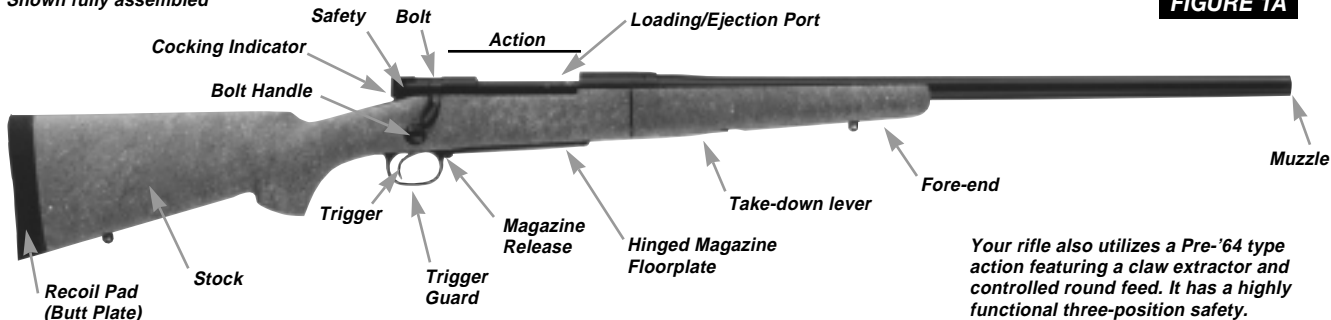
As a gun owner, you accept a set of demanding responsibilities. How seriously you take these responsibilities can be the difference between life and death. There is no excuse for careless or abusive handling of any firearm. At all times handle your rifle and any other firearm with intense respect for its power and potential danger.

***PLEASE READ AND UNDERSTAND ALL OF THE CAUTIONS, PROPER HANDLING PROCEDURES AND INSTRUCTIONS OUTLINED IN THIS BOOKLET BEFORE USING YOUR NEW FIREARM.***

***THE BARREL HALF OF YOUR RIFLE IS DESIGNED AND MADE FOR ONLY THE RECEIVER IT WAS SHIPPED WITH. BARRELS AND RECEIVERS ARE***

Shown fully assembled

**FIGURE 1A**



*Your rifle also utilizes a Pre-'64 type action featuring a claw extractor and controlled round feed. It has a highly functional three-position safety.*

**NOT INTERCHANGEABLE. NEVER ATTEMPT TO USE THE BARREL FROM ONE MODEL 70 TAKE-DOWN ON ANOTHER RIFLE.**

### GENERAL DESCRIPTION

Your new Model 70 has unique features found only on the take-down model. **ALL OTHER GENERAL INSTRUCTIONS AND WARNINGS ARE THE SAME AS FOUND IN THE MODEL 70 OWNER'S MANUAL. IF YOUR MANUAL IS MISSING PLEASE CONTACT US IMMEDIATELY FOR A FREE COPY — BEFORE ATTEMPTING TO USE YOUR NEW RIFLE.**

The Model 70 Take-Down system has the following:

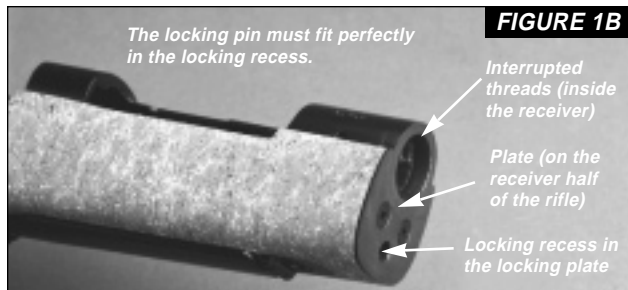
- Accurized Winchester Model 70 long action
- Model 70 trigger assembly

- H-S Precision Pro-Series Match Grade barrel
- H-S Precision Pro-Series kevlar/graphite sporter stock

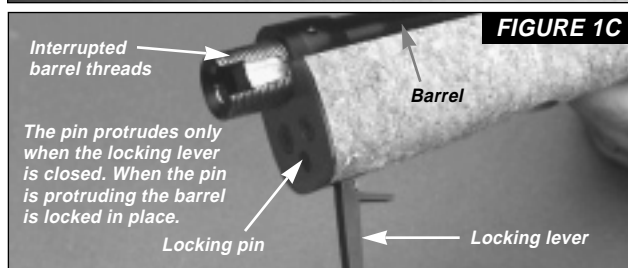
**REFER TO YOUR MODEL 70 OWNER'S MANUAL FOR DETAILS ON THE THREE-POSITION SAFETY AND OTHER FEATURES FOUND ON YOUR NEW MODEL 70.**

### TERMINOLOGY AND DESCRIPTIONS

Descriptions in this manual generally refer to the gun in the horizontal position — in the normal firing position. For example, the muzzle is forward or front; the butt stock is rearward or rear; the trigger is downward or underneath; the sight is upward or on top. For general terminology, refer to Figures 1A - C. Throughout this manual the "action" refers to the mechanism of this rifle which loads and secures the cartridge in the chamber. The takedown system utilizes a threaded barrel extension with interrupted threads, which



**FIGURE 1B**

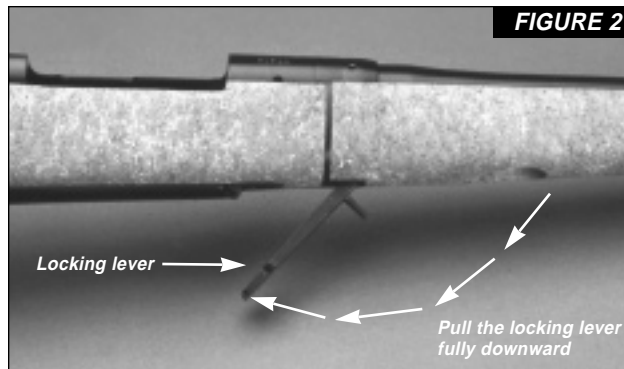


**FIGURE 1C**

allows the barrel to be attached to the receiver with merely a 60° turn. The barrel is locked in place in the receiver with a special, retracting locking pin that is operated using a lever in the forearm.

## SERIAL NUMBER

The serial number is located on both the receiver half of the rifle and the barrel half. The receiver's number located on the right side of the receiver, just forward of the loading/ejection port. The barrel has a serial number (matching the serial number on the receiver) located on the right side of the barrel near the breech. Record the



**FIGURE 2**

serial number at the front of this book for future reference. The barrel must only be used with the same receiver it was sold with. Barrels are not interchangeable.

## TAKE-DOWN PROCEDURE

When your rifle is fully assembled use this procedure to take it down into its two parts.

**COMPLETELY UNLOAD YOUR RIFLE BY REMOVING ALL CARTRIDGES FROM THE MAGAZINE, CHAMBER AND FEED AREAS AS EXPLAINED IN YOUR MODEL 70 MANUAL. MAKE SURE YOUR RIFLE IS POINTED IN A SAFE DIRECTION.**

**PLACE THE SAFETY IN THE INTERMEDIATE "ON SAFE" POSITION.**

1. Remove the bolt assembly completely from your rifle as explained in your Model 70 owner's manual. The barrel will not separate from the receiver unless the bolt is opened/removed.
2. Pull the locking lever downward fully (see Figure 2). This retracts the locking pin from a matching recess in the action.
3. Grasp the barrel half firmly with one hand and the receiver firmly with the other.
4. Turn the barrel assembly counterclockwise 60 degrees. This unlocks the barrel threads from the matching threads in the receiver.

***WARNING: IF THE BARREL SECTION WILL NOT TURN WITH RESPECT TO THE RECEIVER DO NOT APPLY EXTRA FORCE UNTIL YOU CHECK AGAIN TO MAKE SURE YOU HAVE FIRST REMOVED THE BOLT FROM THE RECEIVER. APPLYING UNDUE FORCE WITH THE BOLT STILL LOCKED IN THE ACTION COULD DAMAGE THE ACTION.***

5. Pull the barrel section forward and out of the action.
6. The barrel is now removed from the receiver and you are holding the two halves of your rifle. Your rifle is now fully taken down (refer to Figure 3).
7. To case or store your rifle in the two halves first return the locking lever to its upward position, flush with the bottom of the forearm. Then reinsert the bolt into the receiver and close it.

***NOTE:*** It is possible to separate the barrel half from the receiver half without removing the bolt completely. However, the bolt



must be in the opened position and pulled fully rearward. Taking down your rifle in this way must only be done after you have become completely familiar with your rifle. This is to avoid inadvertently attempting to take down the rifle with the bolt still in place and locked closed and causing damage to the bolt or other components.

#### **RE-ASSEMBLY PROCEDURE**

If your rifle is taken-down into its two component parts follow these instructions for re-assembly and for preparing your rifle for use.

***MAKE SURE YOUR RIFLE IS COMPLETELY UNLOADED. ASSURE THAT ALL CARTRIDGES ARE REMOVED FROM THE MAGAZINE, CHAMBER AND FEED AREAS AS EXPLAINED IN YOUR MODEL 70 MANUAL. MAKE SURE YOUR RIFLE'S MUZZLE IS POINTED IN A SAFE DIRECTION.***

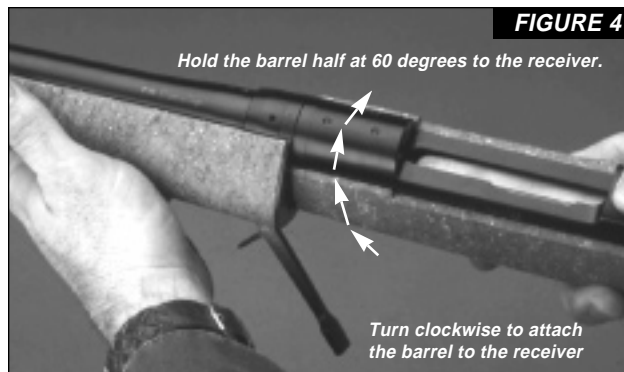
## **PLACE THE SAFETY IN THE INTERMEDIATE “ON SAFE” POSITION.**

1. Remove the bolt assembly completely from the receiver as explained in your Model 70 owner’s manual.
2. Pull the locking lever on the forearm fully downward (refer back to Figure 2). This retracts the locking pin out of the matching recess on the receiver plate.
3. Hold the receiver half of the rifle in one hand and the barrel half in the other.
4. Position the receiver half in normal shooting position (top of the receiver upward) and position the barrel half rotated slightly until the bottom of the forearm is on the left side, angled at approximately 60 degrees.
5. Insert the threaded barrel extension fully into the receiver. The interrupted threads on both the barrel extension and in the receiver allow you to insert the barrel into the receiver.

Insert the barrel extension until the plates on the receiver half and the barrel half should be very close together . . . lightly touching, nearly flush. At this point the barrel is fully inserted.

6. With the barrel extension inserted, turn the barrel clockwise 60° to tighten the connection (see Figure 4). A reasonable amount of force should be required to turn the barrel assembly into its proper position.

***WARNING: IF THE BARREL SECTION WILL NOT TURN WITH RESPECT TO THE RECEIVER DO NOT APPLY EXTRA FORCE UNTIL YOU CHECK AGAIN TO MAKE SURE YOU HAVE FIRST REMOVED THE***



### ***BOLT FROM THE RECEIVER. APPLYING UNDUE FORCE WITH THE BOLT STILL LOCKED IN THE ACTION COULD DAMAGE THE ACTION.***

If it still will not turn, check to make sure there is no foreign matter (dirt, grit, etc.) between the plates on the receiver and barrel halves. Wipe clean and lightly oil. Try again.

7. With the two halves properly in place, close the locking lever by pushing it fully upward into the recess in the bottom of the forearm. The locking pin should fit into the locking recess in the receiver plate. If it will not, check to make sure there is no foreign matter (dirt, grit, etc.) in the locking recess. Wipe clean and lightly oil. Try again. If the locking pin still will not engage check the alignment of the barrel and receiver. If the barrel section has rotated too far or too little with respect to the receiver, adjustment may be necessary (as explained in the following section).

## ADJUSTING THE LOCKING NUT

**IMPORTANT: IN THE EVENT THAT THE BARREL ASSEMBLY ROTATES TOO FAR OR NOT FAR ENOUGH USING A REASONABLE AMOUNT OF FORCE, CAUSING THE LOCKING LEVER NOT TO CLOSE, THE LOCKING NUT MAY REQUIRE ADJUSTMENT.**

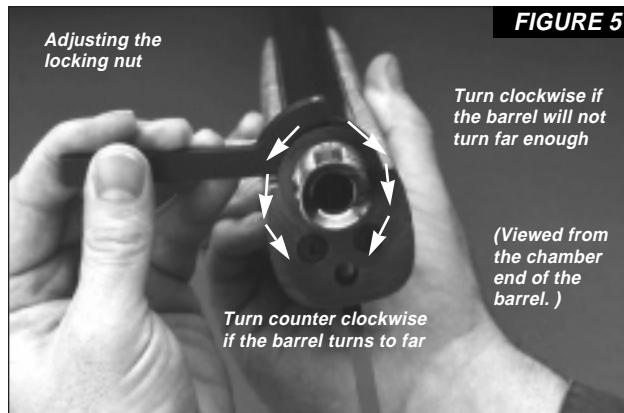
This procedure should only be done if your rifle has gone out of adjustment. A special spanner wrench has been supplied with your rifle. You can determine if your rifle's barrel attachment system is "out of adjustment" by checking for and performing the following:

### **Barrel assembly rotates too far —**

If after inserting the barrel and then turning it to tighten, the barrel goes past the correct position (and the locking pin will not engage the recess on the receiver) then you must tighten the adjusting locking nut. Turn the locking nut counterclockwise (when viewed from the chamber end) using the spanner wrench (refer to Figure 5). This will be an extremely small adjustment which requires trial and error to do correctly. If you inadvertently turn it too far, and the barrel will not rotate enough to close properly, you must loosen the adjusting nut as explained below.

### **Barrel does not rotate far enough —**

If upon rotating the barrel threads into the matching threads in the receiver, the barrel will not rotate far enough for the locking pin to engage you must turn the locking nut clockwise (when viewed from the chamber end) using the spanner wrench (refer to Figure 5).



Adjust the locking nut until the locking pin lines up perfectly with the matching recess on the receiver plate.

**IMPORTANT: THE LOCKING NUT IS NOT TO BE USED FOR SETTING HEADSPACE. YOUR RIFLE HAS CORRECT HEADSPACE SET AT THE FACTORY. THE FUNCTION OF THE LOCKING NUT IS MERELY TO COMPENSATE FOR THREAD WEAR AS THE BARREL ASSEMBLY IS REMOVED AND REINSTALLED INTO THE RECEIVER OVER TIME.**

## ORDERING PARTS

To order parts, please write our parts department and furnish: your name, address, telephone number, model name and serial number. We will send an order form and a parts breakdown with prices. Parts Department, U.S. Repeating Arms Company, Inc., 275 Winchester Ave., New Haven, Connecticut 06511-1970.

**CAUTION: PARTS ARE MADE FOR WINCHESTER BRAND FIREARMS MANUFACTURED BY OR FOR U.S. REPEATING ARMS COMPANY, INC., AND SHOULD NOT BE USED IN OTHER GUNS EVEN THOUGH MODELS MAY BE SIMILAR. IMPROPERLY FITTED PARTS MAY BE DANGEROUS.**

## SERVICE / REPAIR / QUESTIONS

For service call or write the Authorized Repair Center (ARC) nearest you or the U.S. Repeating Arms custom shop. For a list of ARCs call: 1-203-789-5000.

You may also utilize the special services of the H-S Precision Company. For information call: 1-605-341-3006.

Custom Shop, U.S. Repeating Arms Company, Inc., 275 Winchester Ave., New Haven, CT 06511.  
Phone: 1-203-789-5503.

On the web: [www.winchester-guns.com](http://www.winchester-guns.com)



**WINCHESTER**  
RIFLES AND SHOTGUNS

U.S. Repeating Arms Company, Inc.  
275 Winchester Avenue  
New Haven, Connecticut 06511-1970

Administrative Offices:  
275 Winchester Avenue,  
Morgan, Utah 84050-9333



## **You Are Responsible For Firearms Safety**

As a gun owner, you accept a set of demanding responsibilities. How seriously you take these responsibilities can mean the difference between life and death. Failure to follow any of these instructions can cause extensive damage to your gun and/or possible serious injury or death to yourself and others. There is no excuse for careless or abusive handling of any firearm. At all times handle any firearm with intense respect for its power and potential danger.

**PLEASE READ AND UNDERSTAND ALL OF THE CAUTIONS, PROPER HANDLING PROCEDURES AND INSTRUCTIONS OUTLINED IN THE OWNER'S MANUAL BEFORE USING YOUR NEW FIREARM.**

1. **ALWAYS KEEP THE MUZZLE OF YOUR RIFLE POINTED IN A SAFE DIRECTION**, even though you are certain that the rifle is unloaded. Never point any firearm at anything you do not intend to shoot. Be extremely alert and aware of all persons and property within the range of your ammunition.
2. **NEVER RELY TOTALLY ON YOUR RIFLE'S MECHANICAL "SAFETY" DEVICE.** The word "safety" describes a gun's trigger block mechanism, sear block mechanism, hammer block mechanism or firing pin block mechanism. These mechanical devices are designed to place your gun in a **SAFER** status. No guarantee can be made that the gun will not fire even if the "safety" is in the "on safe" position. See "**Operations of the Safety**" for instructions on operation of YOUR gun's "safety."  
**LIKE ANY MECHANICAL DEVICE, A "SAFETY" CAN SOMETIMES FAIL; IT CAN BE JARRED OR INADVERTENTLY MANIPULATED INTO AN UNSAFE CONDITION.**  
Mechanical "safeties" merely aid safe gun handling and are no excuse for pointing your rifle's muzzle in an unsafe direction.  
While it is a good idea to "test" your rifle's mechanical "safeties" periodically for proper function, **NEVER TEST IT WHILE YOUR RIFLE IS LOADED OR POINTED IN AN UNSAFE DIRECTION**  
Safe gun handling does not stop with your gun's mechanical "safety devices -- it starts there. Always treat your rifle with the respect due a loaded, ready-to-fire firearm.
3. **WHENEVER YOU HANDLE A FIREARM, OR HAND IT TO SOMEONE, ALWAYS OPEN THE ACTION IMMEDIATELY, VISUALLY CHECK YOUR RIFLE'S CHAMBER, FEED MECHANISM AND MAGAZINE.**  
Make certain they do not inadvertently contain any ammunition. Always keep the chamber empty and "safety" in the "on safe" position unless shooting is imminent.
4. **DO NOT TRANSPORT YOUR RIFLE LOADED, WHETHER IN A SCABBARD, GUN CASE, OR OTHER CONTAINER.**
5. **HUNTING FROM ELEVATED SURFACES SUCH AS TREE STANDS IS DANGEROUS**, and may increase the risk of handling a firearm. The following rules should always be observed by you and those you hunt with: **Always** make certain that the stand being used is safe and stable. **Always** make certain that your firearm is unloaded when it is being taken up to and down from the stand. **Always** make certain that your firearm is not dropped from the stand, or dropped while it is being taken up to or down from the stand. **Remember**, a loaded firearm may discharge when dropped, even with the safety in the "on safe" position.

6. **BEWARE OF BARREL OBSTRUCTIONS**, for the safety of both your gun and yourself. Mud, snow, and an infinite variety of other obstructions may inadvertently lodge in a barrel bore. It takes only one small obstruction to cause dangerously increased pressures that can ruin (swell or rupture) the finest rifle barrels.  
**BEFORE CHECKING FOR A BARREL OBSTRUCTION, BE CERTAIN NO LIVE ROUND IS IN THE CHAMBER AND THAT THE MAGAZINE IS REMOVED AND FEED MECHANISMS ARE COMPLETELY EMPTY. PLACE THE "SAFETY" IN THE "ON SAFE" POSITION.**  
Look through the barrel to be sure it is clear of any obstruction. If an obstruction is seen, no matter how small it may be, clean the bore with a cleaning rod and patch as described in "**Cleaning and Maintenance Suggestions.**" Before the first firing, clean the bore with a cleaning rod and patch, and wipe away any anti-rust compound in the action/chamber areas.
7. **ALWAYS UNLOAD YOUR RIFLE WHEN NOT IN USE. REFER TO "UNLOADING THE RIFLE" FOR AN EXPLANATION OF HOW TO UNLOAD YOUR RIFLE PROPERLY.**  
As a safety precaution, it is preferable to disassemble your gun for storage. Store your gun and ammunition separately -- well beyond the reach of children. Take all safeguards to ensure your rifle does not become available to untrained, inexperienced or unwelcome hands.
8. **USE THE PROPER AMMUNITION.**  
The barrel and action of this rifle have been made with substantial safety margins over the pressures developed by established American commercial loads. Nevertheless, Browning assumes no liability for incidents which occur through the use of cartridges of nonstandard dimensions which develop pressures in excess of commercially available ammunition with standards established by the Sporting Arms and Ammunitions Manufacturers' Institute (SAAMI).  
**BE ALERT TO THE SIGNS OF AMMUNITION MALFUNCTION.**  
If you detect an off sound or light recoil when a cartridge is fired, **DO NOT LOAD ANOTHER CARTRIDGE INTO THE CHAMBER.** Open the action and remove all cartridges from the magazine, chamber and action areas. With the action open, glance down the barrel to make sure that an obstruction does not remain in the barrel. If there is an obstruction, completely clear the barrel before loading and firing again. Failure to follow these instructions can cause extensive damage to your gun and possible serious injury to yourself and others.  
**MAKE SURE OF ADEQUATE VENTILATION IN THE AREA THAT YOU DISCHARGE A FIREARM. WASH HANDS THOROUGHLY AFTER EXPOSURE TO AMMUNITION OR CLEANING A FIREARM.**  
Lead exposure can be obtained from discharging firearms in poorly ventilated areas, cleaning firearms or handling ammunition. Lead is a substance that has been known to cause birth defects, reproductive harm and other serious injury.
9. **DO NOT SNAP THE FIRING PIN ON AN EMPTY CHAMBER -- THE CHAMBER MAY NOT BE EMPTY!**  
Treat every gun with the respect due a loaded gun, even though you are certain the gun is unloaded.
10. **KEEP FINGERS AWAY FROM THE TRIGGER WHILE UNLOADING, LOADING, UNTIL YOU ARE READY TO SHOOT.**

11. **BE SURE OF YOUR TARGET AND BACKSTOP.**  
Particularly during low light periods. Know the range of your ammunition. Never shoot at water or hard object.
12. **ALWAYS UNLOAD YOUR RIFLE'S CHAMBER BEFORE CROSSING A FENCE, CLIMBING A TREE, JUMPING A DITCH OR NEGOTIATING OTHER OBSTACLES.**  
Refer to "**Unloading The Rifle**" for instructions on the unloading of your rifle. Never place your loaded rifle on or against a fence, tree, car or other similar object.
13. **WEAR EYE AND EAR PROTECTION WHEN SHOOTING.**  
Unprotected, repeated exposure to gunfire can cause hearing damage. Wear ear protectors (shooting ear plugs or muffs) to guard against such damage. Wear shooting glasses to protect your eyes from flying particles. Allow proper distance (eye relief) between the scope and your eye when firing a scoped rifle or shotgun. Always keep a safe distance between the muzzle of your firearm and any persons nearby, as muzzle blast, debris and ejecting shells could inflict serious injury. Also, wear eye protection when disassembling and cleaning your shotgun to prevent the possibility of springs, spring-tensioned parts, solvent or other agents from contacting your eyes.
14. **DROPPING A LOADED GUN CAN CAUSE AN ACCIDENTAL DISCHARGE** even with the "safety" in the "on safe" position. Be extremely careful while hunting or during any shooting activity, to avoid dropping any firearm.
15. **IF YOUR RIFLE FAILS TO FIRE, KEEP THE MUZZLE POINTED IN A SAFE DIRECTION.**  
Hold this position for a minimum of 30 seconds. Carefully open the action and remove the cartridge. If the primer is indented, the cartridge should be disposed of in a way that cannot cause harm. If the primer is not indented, your firearm should be examined by a qualified gunsmith and the cause of the malfunction should be corrected before further use.
16. **BE DEFENSIVE AND ON GUARD AGAINST UNSAFE GUN HANDLING AROUND YOU AND OTHERS.**  
Don't be timid when it comes to gun safety. If you observe other shooters violating any of these safety precautions, politely suggest safer handling practices.
17. **BE CERTAIN YOUR RIFLE IS UNLOADED BEFORE CLEANING.** Because so many gun accidents occur when a firearm is being cleaned, special and extreme care should be taken to be sure your gun is unloaded before disassembly, cleaning and reassembly. Keep ammunition away from the cleaning location. Never test the mechanical function of any firearm with live ammunition.
18. **TEACH AND SUPERVISE FIREARMS SAFETY TO ALL MEMBERS OF YOUR FAMILY -- ESPECIALLY TO CHILDREN AND NONSHOOTERS.**  
Closely supervise newcomers to the shooting sports. Encourage enrolling in hunting/shooting safety courses.
19. **NEVER DRINK ALCOHOLIC BEVERAGES OR TAKE ANY TYPE OF DRUGS BEFORE OR DURING SHOOTING.**  
Your vision and judgment could be dangerously impaired, making your gun handling unsafe to you and to others.

20. **READ AND HEED ALL WARNINGS** in this instruction book, on ammunition boxes and with all accessories that you install on your firearm. It is your responsibility to secure the most up-to-date information on the safe handling procedures of your Browning gun. Browning assumes no liability for incidents which occur when unsafe or improper gun accessories or ammunition combinations are used.
21. **PERIODIC MAINTENANCE -- AVOID UNAUTHORIZED SERVICING.**  
Your rifle is a mechanical device which will not last forever, and as such, is subject to wear and requires periodic inspection, adjustment and service. Browning firearms should be serviced by a Browning Recommended Service Center or by Browning's service facility in Arnold, Missouri. Browning cannot assume any responsibility for injuries suffered or caused by unauthorized servicing, alterations or modifications of Browning firearms.
22. **BROWNING RESERVES THE RIGHT TO REFUSE SERVICE ON FIREARMS THAT HAVE BEEN ALTERED, ADDED TO OR SUBSTANTIALLY CHANGED.**  
Removal of metal from barrel(s), or modification of the firing mechanism and/or operating parts may lead to Browning's refusal of service on such firearms. Browning will charge the owner parts and labor to return the firearm to original Browning specifications.  
**DO NOT, UNDER ANY CIRCUMSTANCES, ALTER THE TRIGGER, SAFETY OR PARTS OF THE FIRING MECHANISM OF THIS OR ANY OTHER FIREARM. FAILURE TO OBEY THIS WARNING MAY RESULT IN INJURY OR DEATH TO YOURSELF OR OTHERS.**

**BE CAREFUL!**