

ROSSI

F I R E A R M S

Owner's Manual

for the G-22 (22 LR)

Pump Action Rifles



READ CAREFULLY BEFORE USING YOUR FIREARM

This Booklet

The safety warnings in this booklet are important. By understanding the dangers inherent in the use of any firearm, and by taking the precautions described herein, you can enjoy complete safety in the use of your Rossi rifle. Failure to heed any of these warnings may result in serious injury to you or others, as well as severe damage to the firearm or other property.

Dangerous Weapons

RIFLES are classified as FIREARMS or DANGEROUS WEAPONS and are sold by us with the specific understanding that we are not responsible in any manner whatsoever for their improper or negligent handling or resale under local laws and regulations.

ROSSI shall not be responsible in any manner whatsoever for malfunctioning of the firearm, or for physical injury or property damage, resulting in whole or in part from (1) criminal or negligent discharge, (2) improper or careless handling, (3) unauthorized modifications, (4) defective, improper hand-loaded, or reloaded ammunition, (5) neglect, or (6) other influences beyond our direct and immediate control. This limitation applies regardless of whether liability is asserted on the basis of contract, negligence or strict liability (including any failure to warn). Under no circumstance shall Rossi be liable for incidental or consequential damages, such as loss of use of property, commercial loss and loss of earnings or profits.

Safety Warnings

Not Just For Beginners

Regardless of your familiarity or experience with firearms, don't assume that you have no need to study this manual.

The safe handling of firearms requires specialized training, discipline and caution. Firearms, by their nature and intended function, are deadly instruments. Accidental death or serious injury can result if they are handled improperly or carelessly.

Firearms rarely cause accidents. Firearms accidents almost always are caused by a failure to obey the basic rules of gun safety. Unfortunately, experienced shooters are found to violate these rules as frequently as beginners. Thus, the basics of safe firearms handling cannot be repeated too often. Read, re-read and memorize the basic principles of firearms safety until they become second nature: habits that you don't forget.

If you have any question about your knowledge or ability to use this or any other firearm with complete safety you should seek supervised instruction. Personalized instruction is often available from gun dealers, gun clubs, state hunter safety programs or police departments in the United States. If none of these sources is accessible, write to the National Rifle Association, Washington, D.C. 20036. THEY WILL ASSIST YOU.

A person with a gun in his possession has a full-time responsibility. He must KNOW how to keep and use his firearm safely, and then must always TAKE the precautions necessary - all of them. He cannot guess; he cannot forget. This responsibility is his alone. It cannot be passed off to someone else.

Remember: no gun can be made accident-proof. A gun is just a machine, with no judgement of its own. It responds to your actions, whether wise or foolish. The only truly effective safety device is the mind of a cautious shooter who never forgets that a moment's carelessness can produce permanent tragedy.

Guns Are Not Alike

Many makes and models of firearms might LOOK nearly the same. However, they differ widely in design and operation, and in the location and function of various controls.

Study this manual thoroughly. Educate yourself on the characteristics and operation of your particular firearm before attempting to handle it. Do not permit others to handle it, unless they also have done so.

You should have an instruction manual for every firearm you own. If you do not, write the manufacturer and obtain one. Most manufacturers will gladly send you one free. If for any reason a manual is not available, visit your public library. Many books have been published which contain detailed information on obsolete or discontinued firearms.

Your knowledge can prevent injuries.

The Rossi rifle was designed and is made to offer the maximum of safety when correctly used. However, as with any other weapon, it is not foolproof, and may become very dangerous if the following basic recommendations are not RIGIDLY observed:

Attention

1. **Never, never-ever** point any gun, loaded or unloaded, at anything you do not intend to shoot.
2. **Always** treat every gun as if it were loaded.
3. Get instruction from a competent firearms instructor before using any gun.
4. The safety is only a mechanical device, not a substitute for common sense.
5. Keep your finger off the trigger until you are actually aiming at the target ready to shoot.
6. Be certain the gun is unloaded before cleaning.
7. Always empty guns before entering a place where there are people.
8. Never leave a loaded gun unattended.

9. Store guns and ammunition separately, beyond the reach of children.
10. Don't test the safety by pulling the trigger while the safety is on unless you are absolutely sure the gun is empty and you are pointing away from everyone.
11. Be sure of your target and backstop before you shoot.
12. Guns and alcohol or drugs don't mix.
13. Never pull a gun towards you by the muzzle. Don't climb a tree or cross a fence with a loaded gun.
14. Load and unload with the muzzle pointed in a safe direction.
15. If a gun fails to fire when the trigger is pulled, keep it pointed at the target for at least 30 seconds. Sometimes slow primer ignition will cause a "hang-fire" and the cartridge will go off after a short pause.
16. Never shoot at hard flat surfaces or water - bullet may ricochet.
17. When receiving a gun always check that it is unloaded.
18. Never put your hand over the muzzle of a gun.
19. Check ammo to be sure it is the right size and caliber, and that it is not dented.
20. Never cock the gun until you are ready to shoot.
21. Dry firing is bad for this gun, whether the safety is engaged or not.
22. **WHILE HANDLING ANY FIREARM, NEVER ALLOW IT TO POINT AT ANY PART OF YOUR BODY OR AT ANOTHER PERSON. NO HARM SHOULD RESULT IF YOU OBEY THIS RULE, EVEN IF AN ACCIDENTAL DISCHARGE OCCURS.**
23. If there is any reason to suspect that a bullet is obstructing the barrel, immediately unload the firearm and look through the bore. It is not sufficient to merely look in the chamber.
24. Treat this gun as a precision instrument.
25. Old or reloaded ammunition may be dangerous. We recommend against using it.
26. Don't try to change your gun's trigger pull, because alteration of trigger pull usually affects sear engagement and may cause accidental discharge.

Write to us concerning any items or circumstances which might relate to your safety and the operation of our products.

Warning

Rossi rifles were manufactured to perform properly with the original parts as designed. It is your duty to make sure any parts you buy are installed correctly and that neither replacements nor originals are altered or changed. Your gun is a complex tool with many parts that must relate correctly to other parts. Putting a gun together wrong or with modified parts can result in a damaged gun, danger and injury or death to you and others through malfunction. Always have a qualified gunsmith work on your gun.

Protect Your Eyes and Ears

Always wear adequate shooting glasses and ear plugs or “ear muff” type protectors whenever you are shooting.

Always make certain that persons close to you are similarly protected.

Unprotected eyes may be injured by powder, gas, carbon residue, lubricant, metallic particles or similar debris which may emanate occasionally from any firearm in normal use.

Without ear protection, repeated exposure to shooting noise may lead to cumulative, permanent hearing loss.



Ammunition

1. Use only high quality, original, factory-manufactured .22 Long Rifle ammunition only, depending on the model. Do not use cartridges that are dirty, wet, corroded, bent or damaged. Do not oil cartridges. Do not spray aerosol type lubricants, preservatives, or cleaners directly onto cartridges or where excess spray may flow into contact with cartridges. Lubricant or other foreign matter on cartridges can cause potentially dangerous ammunition malfunctions. Use only ammunition of the caliber for which your firearm is chambered. The proper caliber is permanently engraved on your firearm; never attempt to use ammunition of any other caliber.
2. The use of reloaded, “remanufactured”, hand-loaded, or other non-standard ammunition voids all warranties. Improperly loaded ammunition voids all warranties. Improperly loaded ammunition can be extremely dangerous. Severe damage to the firearm and serious injury to the shooter or to others may result. Always use ammunition that complies with the industry performance standards established by the Sporting Arms and Ammunition Manufacturers Institute, Inc., of the United States, (SAAMI) or the equivalent from other countries.
3. Firearms may be severely damaged and serious injury to the shooter or to others may result from any condition causing excessive pressure inside the chamber or barrel during firing. Excessive pressure can be caused by obstructions in the barrel, propellant powder overloads, or by the use of incorrect cartridges or defectively assembled cartridges. In addition, the use of a dirty, corroded, or damaged cartridge can lead to a burst cartridge case and consequent damage to the firearm and personal injury from the sudden escape of high-pressure propellant gas within the firearm’s mechanism.
4. Immediately stop shooting and check the barrel for a possible obstruction whenever:
 - You have difficulty in, or feel unusual resistance in, chambering a cartridge, or
 - A cartridge misfires (does not go off), or
 - The mechanism fails to extract a fired cartridge case, or
 - Unburned grains of propellant powder are discovered spilled in mechanism, or
 - A shot sounds weak or abnormal. In such cases it is possible that a bullet is lodged part way down the barrel. Firing a subsequent bullet into the obstructed barrel can wreck the firearm and cause serious injury to the shooter or to bystanders.

5. Bullets can become lodged in the barrel.
 - If the cartridge has been improperly loaded without propellant powder, or if the powder fails to ignite (Ignition of the cartridge primer alone will push the bullet out the cartridge case, but usually does not generate sufficient energy to expel the bullet completely from the barrel).
 - If the bullet is not properly seated tightly in the cartridge case. When such a cartridge is extracted from the chamber without being fired, the bullet may be left behind in the bore at the point where the rifling begins. Subsequent chambering of another cartridge may push the first bullet further into the bore.

6. If there is any reason to suspect that a bullet is obstructing the barrel, immediately unload the firearm and look through the bore. It is not sufficient to merely look in the chamber. A bullet may be lodged some distance down the barrel where it can not easily be seen.

IF A BULLET IS IN THE BORE, DO NOT ATTEMPT TO SHOOT IT OUT BY USING ANOTHER CARTRIDGE, OR BY BLOWING IT OUT WITH A BLANK OR ONE FROM WHICH THE BULLET HAS BEEN REMOVED. SUCH TECHNIQUES CAN GENERATE EXCESSIVE PRESSURE, WRECK THE FIREARM AND CAUSE SERIOUS PERSONAL INJURY.

If the bullet can be removed with a cleaning rod, clean any unburned powder grains from the bore, chamber, and mechanism before resuming shooting. If the bullet cannot be dislodged by tapping it with a cleaning rod, take the firearm to a gunsmith.

7. Dirt, corrosion, or other foreign matter on a cartridge can impede complete chambering and may cause the cartridge case to burst upon firing. The same is true of cartridges which are damaged or deformed.
8. Do not oil cartridges, and be sure to wipe the chamber clean of any oil or preservative before commencing to shoot. Oil interferes with the friction between cartridge case and chamber wall that is necessary for safe functioning, and subjects the firearm to stress similar to that imposed by excessive pressure.
9. Use lubricants sparingly on the moving parts of your firearm. Avoid excessive spraying of any aerosol gun care product, especially where it may get on ammunition. All lubricants and aerosol spray lubricants in particular, can penetrate cartridge primers and cause misfires. Some highly penetrative lubricants can also migrate inside cartridge cases and cause deterioration of the propellant powder; on firing, the powder may not ignite. If only the primer ignites, there is danger that the bullet may become lodged in the barrel.

Warning

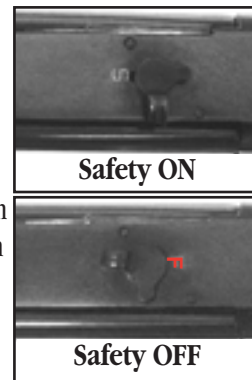
Discharging firearms in poorly ventilated areas, cleaning firearms, or handling ammunition may result in exposure to lead and other substances known to cause birth defects, reproductive harm, and other serious physical injury. Have adequate ventilation at all times. Wash hands thoroughly after exposure.

How To Operate The Safety -

Warning

Prior to firing, know and understand the operation of the safety by practicing with the rifle unloaded.

The safety is a lever located on top of the breech bolt. When the elevated portion of the lever is in line with the barrel and the red "F" is exposed, the rifle will fire when the hammer is in full-cock position and the trigger is pulled. When the elevated portion of the safety lever is turned to the right and is perpendicular to the barrel and the green "S" is exposed, the rifle will not fire when the trigger is pulled.



Warning

Never put the safety between the Safe and Fire notches. Unless the safety is positioned in one of the two notches, you cannot be certain whether it is on safe or fire.

The safest way to carry this rifle is with **NO** round in the chamber. If you feel that you must carry the rifle with a round in the chamber, then the safety lever must be on **SAFE** and the hammer placed in the half-cocked notch. Then, to fire, the hammer should be placed in the full-cocked position and then the safety placed in the fire position.



Always keep this rifle on Safe regardless of the position of the hammer, whether loaded or unloaded. The only time the safety lever should be placed in the Fire position is when you intend to shoot.

Warning

Never disassemble the safety. It has been correctly designed, fitted and tested. Any mechanical device can fail, however, so never rely on the safety to justify careless handling. Never use a firearm with a safety that does not function properly.

How To Load Your Rifle Magazine Loading

Warning

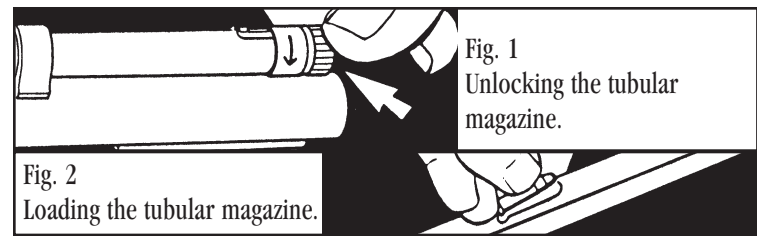
Never attempt to load your rifle with ammunition that does not meet the cartridge designation stamped on the barrel. Use only clean, dry, factory-loaded .22 Long Rifle cartridges in your G22.

Warning

Before loading this firearm, always check the bore to be sure it is free of grease, oil or any other obstruction. **Be sure** the chamber is empty, bolt is open and the safety is on SAFE. To avoid having your hands near the muzzle of a loaded rifle, never add cartridges to a partially loaded tubular magazine.

Warning

This rifle will not function properly unless the inner magazine tube is locked securely in place.



OPEN THE BOLT by first carefully allowing the hammer to move forward **UNDER CONTROL OF YOUR THUMB** while pulling the trigger until the hammer is in the fully forward (at rest) position, then pull forend smartly to the rear.

Then, with the safety on SAFE, keeping your fingers away from the muzzle, turn your rifle upside down and unlock the inner magazine tube by turning the knurled locking end plug (see Fig. 1). Pull the inner tube out until the loading port is exposed. Insert the cartridges, bullet end toward the muzzle (see Fig. 2). When you have loaded up to the stated magazine capacity, shown in this manual under “Specifications”, slide the tube back in place, turning it slightly to ease passage over the loaded rounds. **DO NOT FORCE THE TUBE DOWN**. Then rotate the knurled locking end plug to the locked position. Inner tube will not lock in place if the number of cartridges loaded exceeds the stated magazine capacity.

Cocked and Ready

To chamber the first cartridge, close the bolt by moving the forend forward, then cycle the action again. Always keep the safety on SAFE. The gun is now cocked and ready to fire.

To Fire

With the gun pointed at the target, move the safety to the FIRE position and squeeze the trigger. Open and close the bolt completely for each repeat shot. If you have not fired all cartridges at the target, be sure to put the safety on SAFE until you are ready to shoot again.

How To Unload

With the safety on **SAFE**, and the rifle pointed in a safe direction, open the bolt and eject the loaded cartridge from the chamber.

Cycle the action repeatedly by opening and closing the bolt, until the ejection of cartridges ceases.

Warning

Completely open and fully close the bolt several more times to be certain that the chamber and feed mechanism are empty. Finally, inspect interior of receiver visually. Leave the bolt in the open position.

A safer way to unload the rifle is by (1) placing the safety lever on **SAFE**; (2) removing the inner magazine tube; (3) pouring out and catching the cartridges; (4) replacing magazine tube; and (5) cycling action several times.

ALWAYS INSPECT INTERIOR OF RECEIVER VISUALLY TO MAKE SURE THAT THE MAGAZINE IS EMPTY AND THE CHAMBER IS EMPTY.

What To Do If Rifle Fails To Fire

1. Misfires: If you squeeze the trigger and the cartridge does not fire, remain in the shooting position and count to 30. Then operate the bolt to eject the misfired cartridge from the gun.
2. Underpowered Shot: An underpowered cartridge is unusual if the ammunition is fresh, clean, and factory loaded. However, if you hear an unusual sound or low report, you should stop immediately and proceed as follows:

Warning

Because the bullet may actually still be in the barrel, you must unload completely and then with the bolt open, look through the barrel from the muzzle end to see if there is any obstruction. If there is, it should be removed by a qualified gunsmith.

Sighting

Your rifle was pre-sighted at the factory. However, due to individual sighting characteristics, minor adjustments may be necessary.

Always ensure the rifle is pointed in a safe direction. Put the rifle on **SAFE** and open the bolt before making any sight changes.

1. VERTICAL CORRECTION (Elevation): To raise the point of impact, raise the rear sight. To lower the point of impact, lower the rear sight. The sight can be raised and lowered by moving the stepped elevator forward and back with your thumb.
2. HORIZONTAL CORRECTION (Windage): To move the point of impact to the left, move the rear sight base to the left. To move the point of impact to the right, move the rear sight base to the right.

Windage adjustments to the rear sight can be made by gently tapping the dovetail portion of the rear sight in the desired direction.

How To Clean Your Rifle

Warning

Before cleaning your rifle, be certain it is completely unloaded, and the bolt has been opened.



Never attempt to wipe down or clean a loaded firearm. Follow instructions under “How to Unload” before cleaning.

With normal use it is not necessary to clean the bore of your rifle. However, if the rifle gets wet or if foreign material gets into the action or barrel, cleaning as described below is recommended.

Being sure your rifle is unloaded and pointed in a safe direction with the safety on **SAFE**, cycle the bolt to the rear, as shown in Fig. 1.

Clean the bore and barrel by using any standard .22 caliber commercial cleaning rod and cleaning patches. Clean the barrel with powder solvent and wipe lightly with gun oil after cleaning.

Warning

Further disassembly of the action is not recommended and should only be attempted by a qualified gunsmith.

Take Down Instructions

If you wish to “take down” your rifle for transport or storage, proceed as follows:

1. Place safety lever on.
2. Make sure rifle is unloaded.
3. Place hammer in “half-cocked” position.
4. Unscrew the knurled knob on left rear of receiver until it turns freely.
5. Pull butt stock and rear of receiver to rear.
6. Reassemble in reverse order.

Use a very thin coat of light oil during below freezing conditions. Condensation droplets will form soon after the firearm is brought into a warm room, or it may become wet during inclement weather. In any case, all moisture should be removed. Exterior metal finishes may be wiped down with a slightly oiled cloth. For long term storage, lightly oil the bore, barrel and action with gun oil. Your firearm should be completely unloaded and stored in a dry area. Never store your firearm in a carrying case.

Repair Instructions

Your firearm has been designed, engineered and manufactured in accordance with Rossi’s rigid quality control standards. However, any mechanical device may occasionally require adjustment or repair.

Rossi Limited Warranty

What does this warranty cover?

This warranty covers any service and repair needed by any product manufactured by Rossi, and imported by Braztech, Int’l. or manufactured in the United States by Braztech, Int’l.

How long does coverage last?

This warranty is of unlimited duration.

What will we do?

Rossi will service and/or repair all covered products free of charge.

What does this warranty not cover?

This warranty does not cover stock and forend, sights, accessories, or cosmetic defects after one year, or damage caused by customer abuse at any time.

This express limited warranty is the only warranty on this product. This product is sold “as is” and has no implied warranties of merchantability or fitness for a particular purpose. There are no warranties which extend beyond the description on the face hereof.

How do I get service?

To simplify repair and service, Rossi products imported by Braztech Int’l are serviced and repaired by Braztech. Questions regarding the products of either company can be directed to Braztech in Miami, Florida at 305-474-0401, or in writing to: 16175 N.W. 49th Avenue, Miami, FL 33014 in care of the Consumer Affairs Department.

In order to obtain warranty service or repair, describe the problem in writing and send the gun to Braztech at the above address, insured and pre-paid with the written description of the problem enclosed.

Our Customer Service Department will contact you by mail advising you when to expect your gun back. We will ship guns serviced because of defect in materials or workmanship insured and pre-paid. There will, of course, be no charge for parts or labor if the repair work performed is covered by this express warranty.

How does State Law apply?

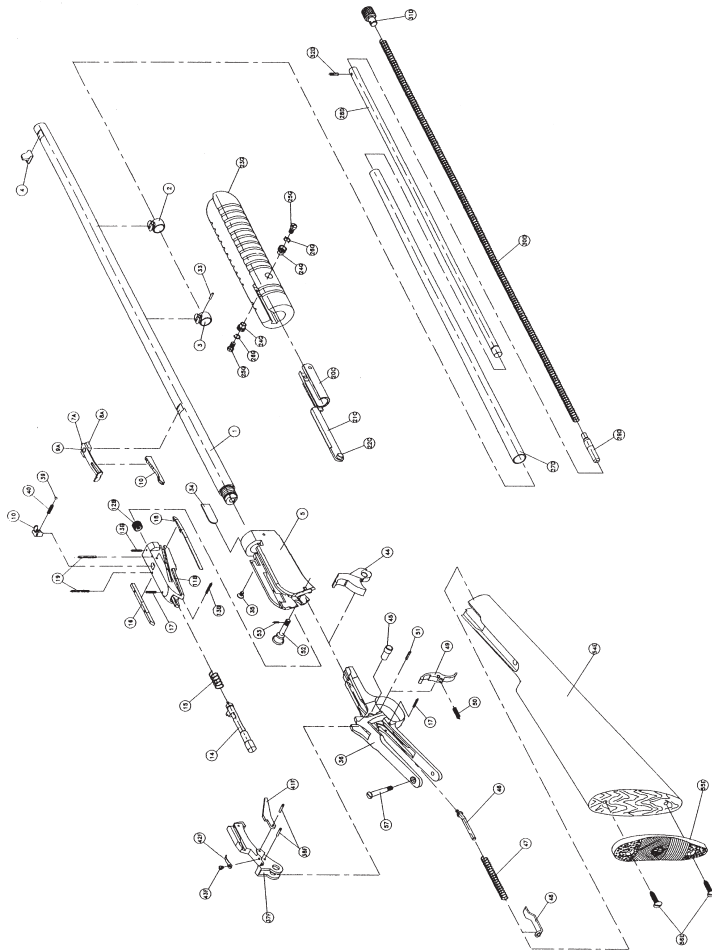
This warranty gives you specific legal rights and you may also have other rights which vary from state to state.

Parts

All firearms require periodic maintenance and inspection which may reveal a need for adjustment or repair. Have your firearm checked by a competent gunsmith annually, even if it seems to be working well, since breakage, improper functioning, undue wear, or corrosion of some components may not be apparent from external examination. If you notice ANY mechanical malfunction, do NOT continue to use the firearm. UNLOAD the firearm and take it to a competent gunsmith immediately.

Our Service Department maintains a full complement of replacement parts for our firearms of current manufacture. Even though most gunsmiths have the knowledge, training and ability to make the necessary repairs to your firearm, the skill and workmanship of any particular gunsmith is totally beyond our control. Should your firearm ever require service, we strongly recommend that you return it to Rossi. Follow the instructions outlined below. Remember, unauthorized adjustments or parts replacement can void your warranty. It is the responsibility of the purchaser to be absolutely certain that any parts ordered from Rossi are of the correct type and are properly fitted and installed by a competent person. **THIS FIREARM IS A PRECISION MECHANISM AND THE IMPROPER FITTING OF PARTS OR IMPROPER MECHANICAL ADJUSTMENT MAY RESULT IN A DANGEROUS MALFUNCTION, DAMAGE TO THE FIREARM, AND POSSIBLE SERIOUS INJURY TO THE SHOOTER OR TO OTHERS.** Therefore, the purchaser and/or installer of parts must accept full responsibility for the correct adjustment of and function of the firearm after such installation has been made or attempted.

Exploded Diagram



Parts List

Barrel.....	1	Rear Magazine Ring Pin.....	33
Front Magazine Ring.....	2	Slide Plate.....	34
Rear Magazine Ring.....	3	Slide Plate Screw.....	35
Front Sight.....	4	Frame.....	36
Receiver.....	5	Carrier.....	37-F
Elevator.....	6	Carrier Lever Pin.....	38-F
Complete Rear Sight A.....	7-A	Carrier Lever.....	41-F
	8-A	Carrier lever Spring.....	42-F
	9-A	Carrier Lever Spring Screw.....	43-F
Breech Bolt B.....	11-B	Hammer.....	44
	12-B	Assembly Screw Bushing.....	45
	13-B	Hammer Spring Guide (Rod).....	46
Firing Pin.....	14	Hammer Spring.....	47
Firing Pin Spring.....	15	Hammer Spring Abutment (Stop).....	48
Firing Pin Stop.....	16	Trigger.....	49
Firing Pin Stop Pin.....	17	Trigger Spring.....	50
Extractor.....	18	Trigger Pin.....	51
Extractor Pin.....	19	Assembly Screw.....	52
Action Slide C.....	20-C	Assembly Screw Stop Pin.....	53
	21-C	Stock.....	54-E
	22-C	Butt Plate.....	55-E
Forend.....	23-G	Butt Plate Screw.....	56-E
Forend Bushing.....	24-G	Tang Screw.....	57
Forend Screw.....	25-G	Locking Lever.....	10
Pressure Washer.....	26-G	Locking Ball.....	39
Magazine Tube.....	27-D	Locking Spring.....	40
Magazine Tube Liner.....	28-D	Locking Pin.....	61
Magazine Follower.....	29-D		
Magazine Spring.....	30-D		
Magazine Plug.....	31-D		
Magazine Plug Pin.....	32-D		

© Copyright 1998 Braztech International, L.C.
Rossi is a registered mark of Amadeo Rossi, S.A.

The information in this manual is provided as guidelines and directions for the safe use of your firearm. Braztech and/or Rossi can not be held responsible for the misuse, illegal or negligent use of our products. We strongly encourage all firearms owners to observe all firearms safety rules.

Keep this and all firearms and ammunition away from unsupervised children.
Firearms safety is everyone's responsibility.

rev. 07/98