

SAVE THIS BOOKLET

BROWNING®



Operation and Care of
CHALLENGER
.22 Automatic Pistol

VERY IMPORTANT

These instructions should be carefully noted

BROWNING ARMS CO.

BROWNING



We are proud that you have chosen a Browning. In its manufacture we have endeavored to incorporate the very finest in materials and craftsmanship, and with just reasonable care this gun should provide you with many years of pleasure and dependable service. If, by any chance, you have any observations to make regarding its performance or appearance, we hope you will write us immediately; your Browning must be flawless.

We would also like to know more about you as a Browning owner and would be grateful if you could take but a moment to complete and return the registration card found on the inside back cover.

Thank you.

BROWNING ARMS COMPANY

BROWNING New Gun Owner's Record

Keep this record for future reference

Browning Model.....

Serial Number.....

Gauge or Caliber.....

Purchase Price.....

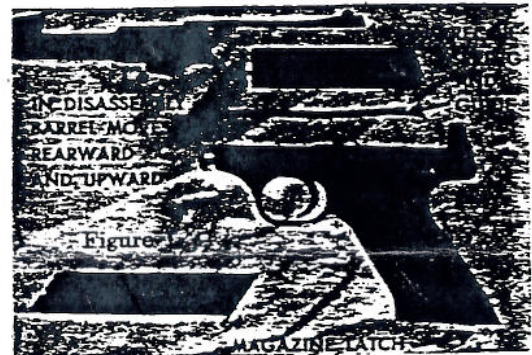
Purchased From.....

Date of Purchase.....

Important: Please fill out and mail the Registration Card at the back of the booklet.

LOADING AND FIRING

Push the magazine latch to the rear and remove the magazine, (Figure 1). Load the



magazine with any number of cartridges, 1 to 10. Insert the loaded magazine into the bottom of the grip, being certain that the magazine is completely in and properly retained by the magazine latch.

Pull the slide completely rearward thus cocking the pistol, (Figure 2). Release the



slide, which will move forward under spring pressure and feed the first cartridge from the magazine into the barrel chamber. The pistol is now loaded and ready to fire. The slide may be locked in the rearward position during the cocking and loading procedure by pushing up on the stop open latch located on the left side of the frame just forward of the manual safety, (Figure 3). Release the slide by pressing the stop open latch down with your thumb and the slide will move forward and feed the first cartridge into the chamber.

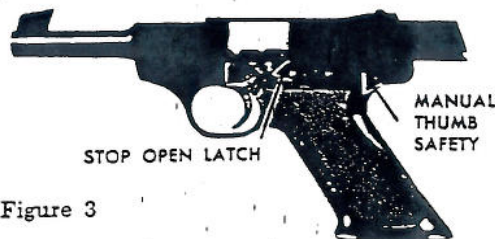


Figure 3

After pulling the trigger and thus firing the cartridge, the pistol automatically extracts and ejects the fired case and feeds a fresh round from the magazine into the chamber ready for firing the next shot. The shooter may fire the pistol until the last cartridge is loaded and fired by merely pulling the trigger for each shot. After the last shot is fired, the stop open latch automatically holds the slide in its open or rearward position, which is a further convenience to reloading.

2

after the last shot is fired, it is a signal that the gun is empty.

DISASSEMBLY

1. Remove the magazine and unload the pistol as described previously.



Figure 4

2. Located under the barrel on the front of the frame is a coin slotted barrel mounting screw. Using a screwdriver or a dime, loosen this screw until it becomes disengaged from the barrel, (Figure 4). It is unnecessary to remove the screw completely from the frame.

3. Pull the slide rearward and lock open with the stop open latch. Tap the muzzle of the barrel on a padded surface to loosen it from its locked position (Fig. 5).

4. Slide the barrel rearward and upward to separate it from the frame, (Figure 1, page 1).



Figure 5

4

UNLOADING THE PISTOL

Remove the magazine from the grip of the pistol and slowly pull rearward on the slide to extract and eject any live cartridge in the barrel chamber. Inspect the action and chamber to be sure that a live cartridge is not remaining in the pistol. The stop open latch does not operate with the magazine removed unless the slide is locked into its rearward position manually or unless the magazine is removed after the last shot is fired, in which event the slide has already been locked rearward automatically.

UNLOADING THE MAGAZINE

Hold the magazine in either hand. Strip out the unfired cartridges with the thumb.

SAFETY

The pistol is equipped with a positive type manual safety located on the left side of the frame, just above the normal position of the thumb when the pistol is gripped. When the safety is pushed up into the notch of the slide, it locks the slide in its closed position and solidly locks the sear into the hammer notch. (Figure 3). It is important to remember that a cartridge in the chamber can be fired after the magazine has been removed so always check the chamber to be certain a live cartridge is not present.

The stop open latch is an additional safety feature. The loaded pistol may not be fired with the slide locked in the rearward position. Also, since the slide stays open automatically

3

5. Release the slide and allow it to move slowly forward and off the front of the frame, being careful not to lose control of the recoil spring. (Figure 1, page 1).

This is sufficient disassembly for all practical cleaning and lubricating required. Further disassembly is recommended only for competent gunsmiths or the factory repair department.

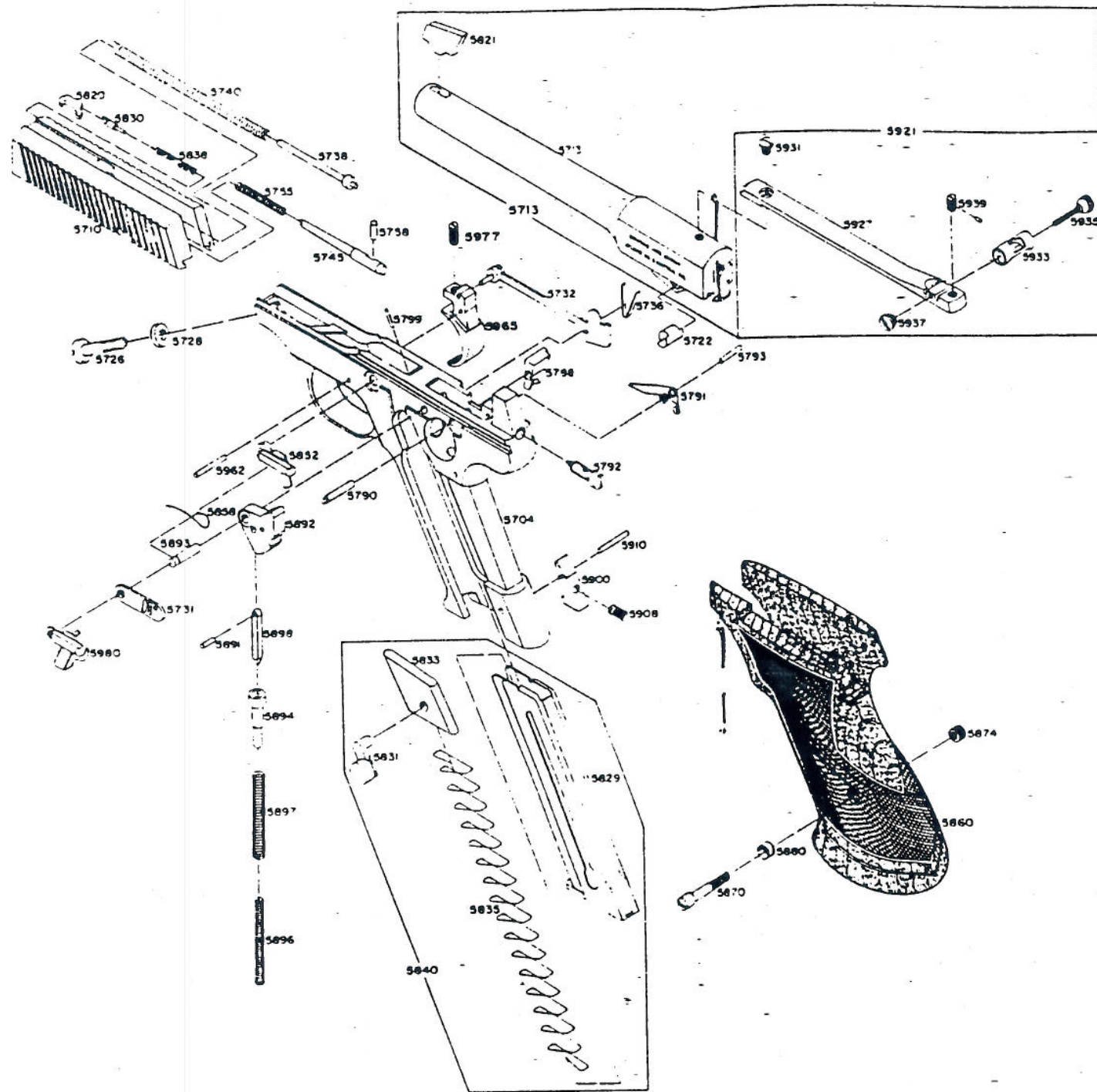
REASSEMBLY

1. Replace the slide on the guide rails of the frame and push rearward until the nib on the end of the recoil spring guide can be placed in the hole in the rear part of the frame, (Figure 1, page 1). Then continue to push the slide as far rearward as it will go and lock in this rearward position with the stop open latch.
2. Place the barrel on the frame so that the barrel guide pin aligns with the barrel guide pin recesses in the frame. Pull the barrel forward into position on the frame and allow the slide to move forward to its closed position.
3. Secure the barrel to the frame by tightening the barrel mounting screw.

Caution: Do not apply maximum pressure when tightening the barrel mounting screw. This should be tightened to just a snug fit. The barrel mounting system is a new patented "V.WAY.WEDGE" locking system, which locks the barrel into tight alignment and prevents the slightest instability.

4. Replace the magazine.

5



BROWNING

CHALLENGER

.22 Caliber Automatic Pistol

IMPORTANT: When ordering parts, list code number, part name, caliber, model and serial number.

Code Number	Name
5704	Frame — with Ejector
5710	Slide
5711	Barrel with Front Sight and Rear Sight
5712	Barrel with Front Sight and Rear Sight
5713	Barrel with Front Sight and Rear Sight
5714	Barrel with Front Sight and Rear Sight
5715	Barrel with Front Sight and Rear Sight
5716	Barrel with Front Sight and Rear Sight
5717	Barrel with Front Sight and Rear Sight
5718	Barrel with Front Sight and Rear Sight
5719	Barrel with Front Sight and Rear Sight
5720	Barrel with Front Sight and Rear Sight
5721	Barrel with Front Sight and Rear Sight
5722	Barrel with Front Sight and Rear Sight
5723	Barrel with Front Sight and Rear Sight
5724	Barrel with Front Sight and Rear Sight
5725	Barrel with Front Sight and Rear Sight
5726	Barrel with Front Sight and Rear Sight
5727	Barrel with Front Sight and Rear Sight
5728	Barrel with Front Sight and Rear Sight
5729	Barrel with Front Sight and Rear Sight
5730	Barrel with Front Sight and Rear Sight
5731	Barrel with Front Sight and Rear Sight
5732	Barrel with Front Sight and Rear Sight
5733	Barrel with Front Sight and Rear Sight
5734	Barrel with Front Sight and Rear Sight
5735	Barrel with Front Sight and Rear Sight
5736	Barrel with Front Sight and Rear Sight
5737	Barrel with Front Sight and Rear Sight
5738	Barrel with Front Sight and Rear Sight
5739	Barrel with Front Sight and Rear Sight
5740	Barrel with Front Sight and Rear Sight
5741	Barrel with Front Sight and Rear Sight
5742	Barrel with Front Sight and Rear Sight
5743	Barrel with Front Sight and Rear Sight
5744	Barrel with Front Sight and Rear Sight
5745	Barrel with Front Sight and Rear Sight
5746	Barrel with Front Sight and Rear Sight
5747	Barrel with Front Sight and Rear Sight
5748	Barrel with Front Sight and Rear Sight
5749	Barrel with Front Sight and Rear Sight
5750	Barrel with Front Sight and Rear Sight
5751	Barrel with Front Sight and Rear Sight
5752	Barrel with Front Sight and Rear Sight
5753	Barrel with Front Sight and Rear Sight
5754	Barrel with Front Sight and Rear Sight
5755	Barrel with Front Sight and Rear Sight
5756	Barrel with Front Sight and Rear Sight
5757	Barrel with Front Sight and Rear Sight
5758	Barrel with Front Sight and Rear Sight
5759	Barrel with Front Sight and Rear Sight
5760	Barrel with Front Sight and Rear Sight
5761	Barrel with Front Sight and Rear Sight
5762	Barrel with Front Sight and Rear Sight
5763	Barrel with Front Sight and Rear Sight
5764	Barrel with Front Sight and Rear Sight
5765	Barrel with Front Sight and Rear Sight
5766	Barrel with Front Sight and Rear Sight
5767	Barrel with Front Sight and Rear Sight
5768	Barrel with Front Sight and Rear Sight
5769	Barrel with Front Sight and Rear Sight
5770	Barrel with Front Sight and Rear Sight
5771	Barrel with Front Sight and Rear Sight
5772	Barrel with Front Sight and Rear Sight
5773	Barrel with Front Sight and Rear Sight
5774	Barrel with Front Sight and Rear Sight
5775	Barrel with Front Sight and Rear Sight
5776	Barrel with Front Sight and Rear Sight
5777	Barrel with Front Sight and Rear Sight
5778	Barrel with Front Sight and Rear Sight
5779	Barrel with Front Sight and Rear Sight
5780	Barrel with Front Sight and Rear Sight
5781	Barrel with Front Sight and Rear Sight
5782	Barrel with Front Sight and Rear Sight
5783	Barrel with Front Sight and Rear Sight
5784	Barrel with Front Sight and Rear Sight
5785	Barrel with Front Sight and Rear Sight
5786	Barrel with Front Sight and Rear Sight
5787	Barrel with Front Sight and Rear Sight
5788	Barrel with Front Sight and Rear Sight
5789	Barrel with Front Sight and Rear Sight
5790	Barrel with Front Sight and Rear Sight
5791	Barrel with Front Sight and Rear Sight
5792	Barrel with Front Sight and Rear Sight
5793	Barrel with Front Sight and Rear Sight
5794	Barrel with Front Sight and Rear Sight
5795	Barrel with Front Sight and Rear Sight
5796	Barrel with Front Sight and Rear Sight
5797	Barrel with Front Sight and Rear Sight
5798	Barrel with Front Sight and Rear Sight
5799	Barrel with Front Sight and Rear Sight
5800	Barrel with Front Sight and Rear Sight
5801	Barrel with Front Sight and Rear Sight
5802	Barrel with Front Sight and Rear Sight
5803	Barrel with Front Sight and Rear Sight
5804	Barrel with Front Sight and Rear Sight
5805	Barrel with Front Sight and Rear Sight
5806	Barrel with Front Sight and Rear Sight
5807	Barrel with Front Sight and Rear Sight
5808	Barrel with Front Sight and Rear Sight
5809	Barrel with Front Sight and Rear Sight
5810	Barrel with Front Sight and Rear Sight
5811	Barrel with Front Sight and Rear Sight
5812	Barrel with Front Sight and Rear Sight
5813	Barrel with Front Sight and Rear Sight
5814	Barrel with Front Sight and Rear Sight
5815	Barrel with Front Sight and Rear Sight
5816	Barrel with Front Sight and Rear Sight
5817	Barrel with Front Sight and Rear Sight
5818	Barrel with Front Sight and Rear Sight
5819	Barrel with Front Sight and Rear Sight
5820	Barrel with Front Sight and Rear Sight
5821	Barrel with Front Sight and Rear Sight
5822	Barrel with Front Sight and Rear Sight
5823	Barrel with Front Sight and Rear Sight
5824	Barrel with Front Sight and Rear Sight
5825	Barrel with Front Sight and Rear Sight
5826	Barrel with Front Sight and Rear Sight
5827	Barrel with Front Sight and Rear Sight
5828	Barrel with Front Sight and Rear Sight
5829	Barrel with Front Sight and Rear Sight
5830	Barrel with Front Sight and Rear Sight
5831	Barrel with Front Sight and Rear Sight
5832	Barrel with Front Sight and Rear Sight
5833	Barrel with Front Sight and Rear Sight
5834	Barrel with Front Sight and Rear Sight
5835	Barrel with Front Sight and Rear Sight
5836	Barrel with Front Sight and Rear Sight
5837	Barrel with Front Sight and Rear Sight
5838	Barrel with Front Sight and Rear Sight
5839	Barrel with Front Sight and Rear Sight
5840	Barrel with Front Sight and Rear Sight
5841	Barrel with Front Sight and Rear Sight
5842	Barrel with Front Sight and Rear Sight
5843	Barrel with Front Sight and Rear Sight
5844	Barrel with Front Sight and Rear Sight
5845	Barrel with Front Sight and Rear Sight
5846	Barrel with Front Sight and Rear Sight
5847	Barrel with Front Sight and Rear Sight
5848	Barrel with Front Sight and Rear Sight
5849	Barrel with Front Sight and Rear Sight
5850	Barrel with Front Sight and Rear Sight
5851	Barrel with Front Sight and Rear Sight
5852	Barrel with Front Sight and Rear Sight
5853	Barrel with Front Sight and Rear Sight
5854	Barrel with Front Sight and Rear Sight
5855	Barrel with Front Sight and Rear Sight
5856	Barrel with Front Sight and Rear Sight
5857	Barrel with Front Sight and Rear Sight
5858	Barrel with Front Sight and Rear Sight
5859	Barrel with Front Sight and Rear Sight
5860	Barrel with Front Sight and Rear Sight
5861	Barrel with Front Sight and Rear Sight
5862	Barrel with Front Sight and Rear Sight
5863	Barrel with Front Sight and Rear Sight
5864	Barrel with Front Sight and Rear Sight
5865	Barrel with Front Sight and Rear Sight
5866	Barrel with Front Sight and Rear Sight
5867	Barrel with Front Sight and Rear Sight
5868	Barrel with Front Sight and Rear Sight
5869	Barrel with Front Sight and Rear Sight
5870	Barrel with Front Sight and Rear Sight
5871	Barrel with Front Sight and Rear Sight
5872	Barrel with Front Sight and Rear Sight
5873	Barrel with Front Sight and Rear Sight
5874	Barrel with Front Sight and Rear Sight
5875	Barrel with Front Sight and Rear Sight
5876	Barrel with Front Sight and Rear Sight
5877	Barrel with Front Sight and Rear Sight
5878	Barrel with Front Sight and Rear Sight
5879	Barrel with Front Sight and Rear Sight
5880	Barrel with Front Sight and Rear Sight
5881	Barrel with Front Sight and Rear Sight
5882	Barrel with Front Sight and Rear Sight
5883	Barrel with Front Sight and Rear Sight
5884	Barrel with Front Sight and Rear Sight
5885	Barrel with Front Sight and Rear Sight
5886	Barrel with Front Sight and Rear Sight
5887	Barrel with Front Sight and Rear Sight
5888	Barrel with Front Sight and Rear Sight
5889	Barrel with Front Sight and Rear Sight
5890	Barrel with Front Sight and Rear Sight
5891	Barrel with Front Sight and Rear Sight
5892	Barrel with Front Sight and Rear Sight
5893	Barrel with Front Sight and Rear Sight
5894	Barrel with Front Sight and Rear Sight
5895	Barrel with Front Sight and Rear Sight
5896	Barrel with Front Sight and Rear Sight
5897	Barrel with Front Sight and Rear Sight
5898	Barrel with Front Sight and Rear Sight
5899	Barrel with Front Sight and Rear Sight
5900	Barrel with Front Sight and Rear Sight
5901	Barrel with Front Sight and Rear Sight
5902	Barrel with Front Sight and Rear Sight
5903	Barrel with Front Sight and Rear Sight
5904	Barrel with Front Sight and Rear Sight
5905	Barrel with Front Sight and Rear Sight
5906	Barrel with Front Sight and Rear Sight
5907	Barrel with Front Sight and Rear Sight
5908	Barrel with Front Sight and Rear Sight
5909	Barrel with Front Sight and Rear Sight
5910	Barrel with Front Sight and Rear Sight
5911	Barrel with Front Sight and Rear Sight
5912	Barrel with Front Sight and Rear Sight
5913	Barrel with Front Sight and Rear Sight
5914	Barrel with Front Sight and Rear Sight
5915	Barrel with Front Sight and Rear Sight
5916	Barrel with Front Sight and Rear Sight
5917	Barrel with Front Sight and Rear Sight
5918	Barrel with Front Sight and Rear Sight
5919	Barrel with Front Sight and Rear Sight
5920	Barrel with Front Sight and Rear Sight
5921	Barrel with Front Sight and Rear Sight
5922	Barrel with Front Sight and Rear Sight
5923	Barrel with Front Sight and Rear Sight
5924	Barrel with Front Sight and Rear Sight
5925	Barrel with Front Sight and Rear Sight
5926	Barrel with Front Sight and Rear Sight
5927	Barrel with Front Sight and Rear Sight
5928	Barrel with Front Sight and Rear Sight
5929	Barrel with Front Sight and Rear Sight
5930	Barrel with Front Sight and Rear Sight
5931	Barrel with Front Sight and Rear Sight
5932	Barrel with Front Sight and Rear Sight
5933	Barrel with Front Sight and Rear Sight
5934	Barrel with Front Sight and Rear Sight
5935	Barrel with Front Sight and Rear Sight
5936	Barrel with Front Sight and Rear Sight
5937	Barrel with Front Sight and Rear Sight
5938	Barrel with Front Sight and Rear Sight
5939	Barrel with Front Sight and Rear Sight
5940	Barrel with Front Sight and Rear Sight
5941	Barrel with Front Sight and Rear Sight
5942	Barrel with Front Sight and Rear Sight
5943	Barrel with Front Sight and Rear Sight
5944	Barrel with Front Sight and Rear Sight
5945	Barrel with Front Sight and Rear Sight
5946	Barrel with Front Sight and Rear Sight
5947	Barrel with Front Sight and Rear Sight
5948	Barrel with Front Sight and Rear Sight
5949	Barrel with Front Sight and Rear Sight
5950	Barrel with Front Sight and Rear Sight
5951	Barrel with Front Sight and Rear Sight
5952	Barrel with Front Sight and Rear Sight
5953	Barrel with Front Sight and Rear Sight
5954	Barrel with Front Sight and Rear Sight
5955	Barrel with Front Sight and Rear Sight
5956	Barrel with Front Sight and Rear Sight
5957	Barrel with Front Sight and Rear Sight
5958	Barrel with Front Sight and Rear Sight
5959	Barrel with Front Sight and Rear Sight
5960	Barrel with Front Sight and Rear Sight
5961	Barrel with Front Sight and Rear Sight
5962	Barrel with Front Sight and Rear Sight
5963	Barrel with Front Sight and Rear Sight
5964	Barrel with Front Sight and Rear Sight
5965	Barrel with Front Sight and Rear Sight
5966	Barrel with Front Sight and Rear Sight
5967	Barrel with Front Sight and Rear Sight
5968	Barrel with Front Sight and Rear Sight
5969	Barrel with Front Sight and Rear Sight
5970	Barrel with Front Sight and Rear Sight
5971	Barrel with Front Sight and Rear Sight
5972	Barrel with Front Sight and Rear Sight
5973	Barrel with Front Sight and Rear Sight
5974	Barrel with Front Sight and Rear Sight
5975	Barrel with Front Sight and Rear Sight
5976	Barrel with Front Sight and Rear Sight
5977	Barrel with Front Sight and Rear Sight
5978	Barrel with Front Sight and Rear Sight
5979	Barrel with Front Sight and Rear Sight
5980	Barrel with Front Sight and Rear Sight
5981	Barrel with Front Sight and Rear Sight
5982	Barrel with Front Sight and Rear Sight
5983	Barrel with Front Sight and Rear Sight
5984	Barrel with Front Sight and Rear Sight
5985	Barrel with Front Sight and Rear Sight
5986	Barrel with Front Sight and Rear Sight
5987	Barrel with Front Sight and Rear Sight
5988	Barrel with Front Sight and Rear Sight
5989	Barrel with Front Sight and Rear Sight
5990	Barrel with Front Sight and Rear Sight
5991	Barrel with Front Sight and Rear Sight
5992	Barrel with Front Sight and Rear Sight
5993	Barrel with Front Sight and Rear Sight
5994	Barrel with Front Sight and Rear Sight
5995	Barrel with Front Sight and Rear Sight
5996	Barrel with Front Sight and Rear Sight
5997	Barrel with Front Sight and Rear Sight
5998	Barrel with Front Sight and Rear Sight
5999	Barrel with Front Sight and Rear Sight
6000	Barrel with Front Sight and Rear Sight

frame. Turning the adjusting screw in a counter-clockwise direction increases backlash. Turning the screw clockwise decreases backlash. Beyond a certain point, backlash can be reduced no more and further tightening of the backlash screw will only stiffen trigger pull, ultimately causing the trigger to become inoperative.

SIGHTS

The pistol is equipped with a precision rear sight which is screw adjustable for both horizontal and vertical correction.

1. To move point of impact to the right, simply loosen the coin slotted screw, located on the right side of the sight, by turning in a counter-clockwise direction and tighten the screw on the left side by turning in a clockwise direction. This causes the rear sight to move to the right. To move the point of impact to the left, just reverse this procedure (Fig. 7).
2. To raise the point of impact, turn the elevation screw located just behind the rear sight in a clockwise direction. To lower, turn the elevation screw in a counter-clockwise direction, (Fig. 7).



Figure 7

TRIGGER PULL ADJUSTMENT

The adjusting screw to regulate the trigger pull is located on the rear face of the frame. Turn this screw in a counter-clockwise direction to lighten the trigger pull for the more meticulous type of target shooting. When the top of the screw head is approximately flush with the outside surface or face of the frame, tension is off the screw and maximum reduction of trigger pull has been effected. It is inadvisable to loosen this adjustment screw beyond this point.

The screw is turned in a clockwise direction to increase the trigger pull for greater safety in general shooting. Trigger pull may be increased as desired. The screw head eventually bottoms against the recess in the frame. This determines its maximum limit.

TRIGGER BACKLASH ADJUSTMENT

The adjusting screw to regulate trigger backlash is located in the top surface of the trigger. (Figure 6). This screw is reached by first removing the barrel of this pistol. Leave the slide locked in the rearward position. The adjusting screw can then be reached with a small screwdriver through the top of the



Figure 6

TRIGGER BACKLASH
ADJUSTMENT SCREW

9

CLEANING

The slide assembly may be cleaned with any good solvent such as kerosene and then dried with a clean cloth, or preferably blown dry with air pressure, if available.

The barrel may be cleaned with a powder solvent, if and as necessary, but ordinarily a light lubricating oil will suffice for this purpose. When cleaning the bore of the barrel, it is preferable to enter the cleaning rod from the chamber end of the barrel. Use a small brush to remove dirt or other foreign matter from other parts of the action. Lubricate the pistol with a good light gun oil. All moving parts should be occasionally lubricated. Use oil sparingly; a very light film is sufficient.

The magazine should be cleaned after every 1,000 to 1,500 rounds for best operation since a certain amount of lubricant and dirt will gradually collect in this mechanism. Place the magazine in a good cleaning solvent such as kerosene and agitate to loosen and remove grease and dirt. While the magazine is still submerged, also pull the magazine follower back and forth a few times. Shake all excess solvent from the magazine and dry with a cloth, or preferably blow dry with air pressure, if available.

Caution: Most solvents are highly inflammable. Appropriate safety measures should be practiced when working with solvents.

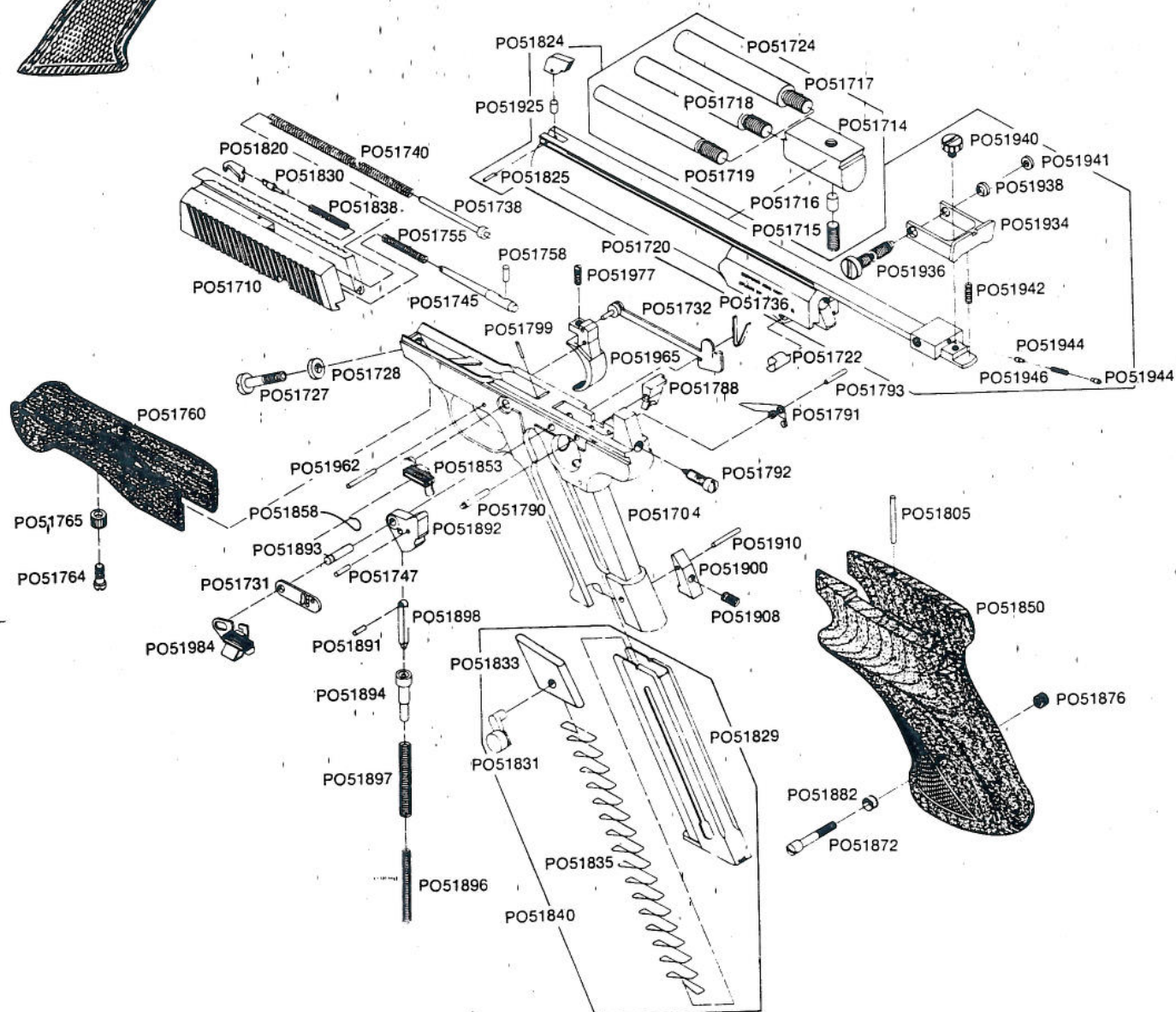


Prices F.O.B. point of shipment—subject to change without notice. Minimum billing for parts order \$2.00.
IMPORTANT—When ordering, list Code Number, Part Name, Gun Gauge/Caliber and Serial Number.
 Prices Effective April 1, 1980.

CODE NO.	PART NAME	SUGGESTED RETAIL	CODE NO.	PART NAME	SUGGESTED RETAIL
PO51710	Slide	N-C-M \$42.50	PO51850	Grip—Wood—Righthand	
PO51711	Barrel with Front Sight and Rear Sight Assembly			Target	M 112.50
	Complete 4½"	N-C 73.50	PO51851	Grip—Wood—Lefthand	
PO51713	Barrel with Front Sight and Rear Sight Assem.			Target	M 112.50
	Complete 6¾"	N-C 73.50	PO51852	Stop Open Latch	C 4.40
PO51720	Barrel with Front Sight and Rear Sight Assem. Complete		PO51853	Stop Open Latch	M 4.40
	with Ventilated Rib	M 110.00	PO51854	Grip—Novadur—Plastic	N 9.25
PO51721	Barrel Medalist International 5.9"	M 126.00	PO51858	Stop Open Latch Spring	C-M .50
PO51722	Barrel Guide Pin	N-C-M 1.60	PO51860	Grip—Wood	C 57.50
PO51714	Counterweight Support— 2.41 oz.	M 8.50	PO51868	Grip Screw	N .95
PO51715	Counterweight Support Screw	M .60	PO51870	Grip Screw	C .95
PO51716	Counterweight Support Bushings	M .35	PO51872	Grip Screw	M 1.45
PO51717	Counterweight 2.52 oz.	M 2.10	PO51874	Grip Escutcheon	
PO51718	Counterweight 1.79 oz.	M 2.10		Threaded	N-C .95
PO51719	Counterweight .94 oz.	M 2.10	PO51876	Grip Escutcheon	
PO51724	Counterweight Support and Weights (Complete Set)	M 15.75		Threaded	M .95
PO51726	Barrel Mounting Screw	N-C 1.85	PO51880	Grip Escutcheon	
PO51727	Barrel Mounting Screw	M 1.85		Unthreaded	N-C .90
PO51728	Barrel Mounting Screw Washer	N-C-M .45	PO51882	Grip Escutcheon	
PO51730	Click Plate	N 3.30		Unthreaded	M .90
PO51731	Click Plate	C-M 3.65	PO51891	Hammer Link Pin	N-C-M .45
PO51732	Disconnecter	N-C-M 4.70	PO51898	Hammer Link	N-C-M 2.00
PO51736	Disconnecter Spring	N-C-M .80	*PO51892	Hammer	N-C-M 10.90
PO51738	Recoil Spring Guide	N-C-M .95	PO51893	Hammer Pin	C-M .55
PO51740	Recoil Spring	N-C-M .75	PO51895	Hammer Pin	N .55
PO51745	Firing Pin	N-C-M 3.10	PO51894	Main Spring Plunger	N-C-M .95
PO51747	Fire Pin—For Dry Firing	M .55	PO51896	Main Spring—Inner	N-C-M 1.25
PO51755	Firing Pin Spring	N-C-M .60	PO51897	Main Spring—Outer	N-C-M .75
PO51758	Firing Pin Retaining Pin	N-C-M .45	PO51900	Magazine Latch	N-C-M .75
PO51760	Forearm	M 43.10	PO51908	Magazine Latch Spring	N-C-M .75
PO51764	Forearm Screw	M 1.20	PO51910	Magazine Latch Pin	N-C-M .45
PO51765	Forearm Screw Escutcheon	M .45	PO51921	Sight Assembly Rear— Complete	N-C 25.00
*PO51788	Sear	N-C-M 7.25	PO51924	Sight Assembly Complete	
PO51790	Sear Pin	N-C-M .60		with Rib and Front Sight	M 44.25
PO51791	Sear Spring	C-M 12.90	PO51925	Ventilated Rib Retaining Pin	M .45
PO51794	Sear Spring	N 2.35	PO51927	Sight Base—Rear	N-C 14.25
PO51793	Sear Spring Pin	C-M .45	PO51931	Sight Base Mounting	
PO51799	Ejector	N-C-M .50		Screw—Rear	N-C 1.00
PO51805	Ejector Deflection Pin	M .50	PO51933	Sight Aperture—Rear	N-C 5.30
PO51820	Extractor	N-C-M 2.70	PO51934	Sight Aperture—Rear	M 10.90
PO51838	Extractor Spring	N-C-M 1.25	PO51935	Sight Adjusting Screw— Rear—Windage	N-C 2.25
PO51830	Extractor Plunger	N-C-M .95	PO51936	Sight Adjusting Screw— Rear—Windage	M 1.85
PO51821	Sight Blade—Front— Old Style	N-C 3.80	PO51938	Sight Adjusting Bushing— Rear—Windage	M .60
PO51824	Sight Blade—Front	M 3.80	PO51941	Sight Adjusting Washer— Rear—Windage	M .45
PO51825	Sight Blade—Retaining Pin—Front	M .45	PO51939	Sight Adjusting Screw— Rear—Elevation	N-C .75
PO51826	Sight Blade—Front New Type	N-C 4.20	PO51940	Sight Adjusting Screw— Rear—Elevation	M 1.70
PO51827	Sight Retaining Pin	N-C .45	PO51942	Sight Tension Spring—Elevation	M .45
PO51828	Sight Ramp—Front	N-C 4.85	PO51944	Sight Adjusting Screw Follower —Windage & Elevation	M .60
PO51829	Magazine Body	N-C-M 22.70	PO51946	Sight Adjusting Screw Follower Spring—Windage or Elevation	M .60
PO51831	Magazine Button	N-C-M 2.50	*PO51970	Trigger—Blued	N 10.50
PO51833	Magazine Follower	N-C-M 4.30	*PO51965	Trigger—Gold Plated—with Backlash Screw	C-M 15.00
PO51835	Magazine Spring	N-C-M 1.50	PO51962	Trigger Pin	N-C-M .45
PO51848	Grip—Wood—Medalist		PO51977	Trigger Backlash Adjustment Screw	C-M .90
	International Righthand	M 87.50	PO51792	Trigger Pull Adjustment Screw	C-M 1.55
PO51849	Grip—Wood—Medalist		PO51980	Safety	N-C 4.20
	International Lefthand	M 87.50	PO51984	Safety	M 4.20

*Indicates part must be fitted by Browning Service Department or qualified gunsmiths.
 NOTE: Unless otherwise indicated, part is interchangeable between gauges/calibers.
 See page 48 for price of complete magazine. N—Nomad C—Challenger M—Medalist.

†Part may be purchased only by holders of current valid Federal Firearms Licenses.



Schematic is provided for parts identification only and should not be used as a guide to assemble guns.



BROWNING®

Western Gun Parts and Commemorative Arms Co., who are referenced below, have purchased our remaining parts inventory of this firearm. All inquiries concerning parts should be directed to them.

We apologize for any inconvenience that this may have caused and thank you for your patience.

Parts: Western Gun Parts, Ltd.
17324 106 A Avenue
Edmonton, Alberta T5S 1E6
Canada
(780) 489-5711

Commemorative Arms Company
Attention: Nicholas J. Riggio
5149 Daggett Avenue
St. Louis, Missouri 63110
(314) 771-5700

Service: Alhman's Custom Gun Shop
9525 W 230th Street
Morristown, Minnesota 55052
(507) 685-4243 or 4244

Art's Gun Shop
6008 Highway Y
Hillsboro, Missouri 63050
(636) 944-3630

Walker Arms Company
499 County Road 820
Selma, Alabama 36701
(334) 872-6231

You Are Responsible For Firearms Safety

As a gun owner, you accept a set of demanding responsibilities. How seriously you take these responsibilities can be the difference between life and death.

THERE IS NO EXCUSE FOR CARELESS OR ABUSIVE HANDLING OF ANY FIREARM. AT ALL TIMES HANDLE YOUR HANDGUN AND ANY OTHER FIREARM WITH INTENSE RESPECT FOR ITS POWER AND POTENTIAL DANGER. PLEASE READ AND UNDERSTAND THE CAUTIONS AND PROPER HANDLING PROCEDURES OUTLINED IN THIS BOOKLET BEFORE USING YOUR NEW FIREARM.

1 ALWAYS KEEP THE MUZZLE OF YOUR HANDGUN POINTED IN A SAFE DIRECTION.

Never point any firearm at anything you do not intend to shoot. Be extremely alert and aware of all persons and property within the range of your ammunition.

2 NEVER RELY TOTALLY ON YOUR FIREARM'S MECHANICAL "SAFETY" DEVICE.

The word "safety" describes a gun's blocking or disengaging mechanism for the trigger, sear, hammer and/or firing pin. Although mechanical devices place pistol in a SAFER status, no guarantee can be made that the gun will not fire even if the "safety" is on the "on safe" position.

LIKE ANY MECHANICAL DEVICE, A "SAFETY" CAN SOMETIMES FAIL; IT CAN BE JARRED OR INADVERTENTLY MANIPULATED INTO AN UNSAFE CONDITION. Mechanical "safeties" merely aid safe gun handling and are no excuse for pointing your guns muzzle in an unsafe direction. While it is a good idea to "test" your guns mechanical "safeties" periodically for proper function, ***NEVER TEST IT WHILE YOUR GUN IS LOADED OR POINTED IN AN UNSAFE DIRECTION.***

Safe gun handling does not stop with your guns mechanical "safety" devices – it starts there. Always treat this pistol with the respect due a loaded, ready-to-fire firearm.

3 DO NOT CARRY YOUR HANDGUN WITH A ROUND IN THE CHAMBER.

For good safety practice, it is recommended that a round not be chambered until immediately before your pistol is to be fired.

4 WHENEVER YOU HANDLE YOUR HANDGUN, OR HAND IT TO SOMEONE, MAKE SURE IT IS COMPLETELY UNLOADED.

To fully unload your handgun, you must first remove the magazine, open and lock the slide rearward, and visually inspect the chamber to be certain it does not contain a cartridge. It is vital that you remove the magazine from your pistol so a cartridge is not automatically chambered when you close the action. Always keep the chamber empty and "safety" in the "on safe" position unless shooting is imminent.

5 *DO NOT TRANSPORT YOUR FIREARM LOADED.*

Keep it unloaded, whether stored in a holster, gun case or other container.

6 *HUNTING FROM ELEVATED SURFACES SUCH AS TREE STANDS IS DANGEROUS.* and may increase the risk of handling a firearm. The following rules should always be observed by you and those you hunt with: Always make certain that the stand being used is safe and stable. Always make certain that your firearm is unloaded when it is being taken up and down from the stand. Always make certain that your firearm is not dropped from the stand, or dropped while it is being taken up or down from the stand. Remember, a loaded firearm may discharge when dropped, even with the safety in the safe position.

7 *BEWARE OF BARREL OBSTRUCTIONS.*

When preparing to shoot your pistol, check for a barrel obstruction as follows: first, fully unload the pistol by removing the magazine, locking the action open and inspecting the chamber. *BE CERTAIN NO LIVE ROUND IS IN THE CHAMBER.* Then glance down the barrel to be sure it is clear of any obstruction. It takes only one small obstruction to dangerously increase pressures. Before the first firing, clean the bore with a cleaning rod and patch, and wipe away any anti-rust compounds in the chamber and around the action.

BE ALERT TO THE SIGNS OF AMMUNITION MALFUNCTION.

If you detect an off sound or light recoil when a cartridge is fired, do not load another cartridge into the chamber. Fully unload by removing the magazine and removing the cartridge from the chamber. With the action open, glance down the barrel to make sure that an obstruction does not remain in the barrel. If there is an obstruction, completely clear the barrel before loading and firing again. Failure to follow these instructions can cause extensive damage to your gun and possible serious injury to yourself and others.

8 *BE CERTAIN YOUR PISTOL IS UNLOADED BEFORE CLEANING.*

Because so many gun accidents occur when a firearm is being cleaned, special and extreme care should be taken to be sure your gun is unloaded before disassembly, cleaning and reassembly. Keep ammunition away from the cleaning location. Never test the mechanical function of any firearms with live ammunition.

9 *ALWAYS COMPLETELY UNLOAD YOUR PISTOL WHEN NOT IN USE.*

Your responsibilities do not end when your firearm is unattended. Store your pistol and ammunition separately and well beyond the reach of children. Take all safeguards to ensure your pistol does not become available to untrained, inexperienced or unwelcome hands.

10 *USE THE PROPER AMMUNITION.*

The barrel and action of this pistol have been made with substantial safety margins over the pressures developed by established American commercial loads.

HOWEVER, BROWNING ASSUMES NO LIABILITY FOR ACCIDENTS WHICH OCCUR THROUGH THE USE OF CARTRIDGES OF NON-STANDARD DIMENSIONS OR THAT DEVELOP PRESSURES IN EXCESS OF COMMERICALLY AVAILABLE AMMUNITION THAT HAS BEEN LOADED IN ACCORDANCE WITH STANDARDS ESTABLISHED BY THE SPORTING ARMS AND AMMUNITION MANUFACTURERS INSTITUTE (SAAMI).

EXAMINE EVERY CARTRIDGE YOU PUT IN YOUR FIREARM.

Browning cannot assume any responsibility for the use of unsafe or improper arms and ammunition combinations. It is your responsibility to read and heed all warnings in your instruction manual and on ammunition boxes.

11 *DISCHARGING FIREARMS IN POORLY VENTILATED AREAS, CLEANING FIREARMS, OR HANDLING AMMUNITION MAY RESULT IN EXPOSURE TO LEAD AND OTHER SUBSTANCES KNOWN TO CAUSE BIRTH DEFECTS, REPRODUCTIVE HARM AND OTHER SERIOUS PHYSICAL INJURY. HAVE ADEQUATE VENTILATION AT ALL TIMES, WASH HANDS THOROUGHLY AFTER EXPOSURE.*

12 *DO NOT SNAP THE FIRING PIN ON AN EMPTY CHAMBER – THE CHAMBER MAY NOT BE EMPTY!*

Treat every gun with the respect due a loaded gun, even though you are certain the gun is unloaded.

13 *KEEP YOUR FINGERS AWAY FROM THE TRIGGER WHILE UNLOADING AND LOADING – UNTIL YOU ARE READY TO SHOOT.*

14 *BE SURE OF YOUR TARGET AND BACKSTOP.*

Take additional care during low light periods. Know the range of your ammunition. Never shoot at water or hard objects.

15 *DROPPING YOUR HANDGUN WHEN LOADED CAN CAUSE AN ACCIDENTAL DISCHARGE EVEN WITH THE "SAFETY" ON.*

Be extremely careful while hunting or during any shooting activity, to avoid dropping a loaded firearm.

16 ALWAYS COMPLETELY UNLOAD YOUR PISTOL'S CHAMBER BEFORE CROSSING A FENCE, CLIMBING A TREE, JUMPING A DITCH OR NEGOTIATING OTHER OBSTACLES.

Never place your firearm on a car, or on any unstable object.

17 IF YOUR FIREARM FAILS TO FIRE, KEEP THE MUZZLE POINTED IN A SAFE DIRECTION.

Hold this position for a minimum of 30 seconds. Carefully open the action and remove the cartridge. If the rim is indented, the cartridge should be disposed of in a way that cannot cause harm. If the rim is not indented, your firearm should be examined by a qualified gunsmith and the cause of the malfunction should be corrected before further use.

18 WEAR EYE AND EAR PROTECTION WHEN SHOOTING.

Unprotected, repeated exposure to gunfire can cause hearing damage. Wear hearing protectors (shooting ear plugs or muffs) to guard against such damage. Wear shooting glasses to protect your eyes from flying particles. Always keep a safe distance between the muzzle of your firearm and any persons nearby, as muzzle blast, debris and ejecting shells could inflict serious injury. Also, wear eye protection when disassembling and cleaning your pistol to prevent the possibility of springs, spring-tensioned parts, solvents or other agents from contacting your eyes.

19 BE DEFENSIVE AND ON GUARD AGAINST UNSAFE GUN HANDLING AROUND YOU AND OTHERS.

Don't be timid when it comes to gun safety. If you observe other shooters violating any of these safety precautions, politely suggest safer handling practices.

20 SUPERVISE AND TEACH FIREARMS SAFETY TO ALL MEMBERS OF YOUR FAMILY.

This is especially important when children and non-shooters are involved. Closely supervise newcomers to the shooting sports. Encourage enrollment in hunting/shooting safety courses.

21 NEVER DRINK ALCOHOLIC BEVERAGES OR TAKE ANY TYPE OF DRUGS BEFORE OR DURING SHOOTING.

Your vision and judgment could be dangerously impaired, making your gun handling unsafe to you or to others.

22 PERIODIC MAINTENANCE – AVOID UNAUTHORIZED SERVICING.

Your firearm is a mechanical device which will not last forever, and as such, is subject to wear and requires periodic inspection, adjustment, and service. Like all Browning firearms, your firearm should be serviced by a Browning Recommended Service Center or by Browning's service facility in Arnold, Missouri.

***BROWNING CANNOT ASSUME ANY RESPONSIBILITY FOR INJURIES
SUFFERED OR CAUSED BY UNAUTHORIZED SERVICING, ALTERATIONS OR
MODIFICATIONS OF BROWNING FIREARMS.***

Read and heed all warnings in your owner's manual, on ammunition boxes and with all accessories that you install on your firearm. It is your responsibility to secure the most up-to-date information on the safe handling procedures for your Browning gun. Browning assumes no liability for incidents which occur when unsafe or improper gun accessories or ammunition combinations are used.

Do not, under any circumstance, alter the trigger, safety or parts of the firing mechanism of this or any other firearm. Failure to obey this warning may result in injury or death to yourself or others.

BE CAREFUL!