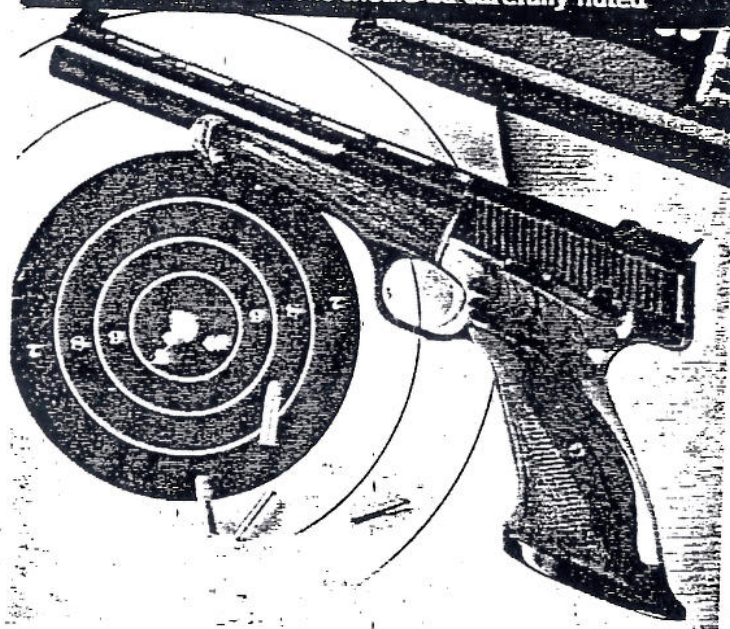


Operation and Care of BROWNING MEDALIST .22 Automatic Pistols

VERY IMPORTANT • SAVE THIS BOOKLET
These instructions should be carefully noted



MEDALIST .22 AUTOMATIC PISTOL

These instructions also apply to the Medalist International Pistol with those exceptions noted in the instructions.

NOMENCLATURE

In conventional gun terminology the position and movement of pistol parts are described as they occur with the pistol horizontal and in normal firing position; i.e. the muzzle is forward or front; the pistol grip is rearward or rear; the trigger is downward or underneath; the sights are upward or on top.

CAUTION

a. Always visually check your pistol to be certain that it does not inadvertently contain any ammunition. Whenever possible, keep the thumb safety in the "on safe" position by pressing it upward into the recess provided for it in the slide.

b. Whether you believe the pistol to contain ammunition or to be empty, always remember to point the muzzle in a safe direction.

c. Before firing your pistol make sure there are NO OBSTRUCTIONS in the barrel and clean the bore using a cleaning rod and patch. Wipe away any anti-rust compounds present in the action-chamber areas.

AMMUNITION — Your pistol must be used only with .22 Long Rifle Cartridges. The barrel and action of this pistol have been made with substantial safety margins over

the pressures developed by established commercial loads. Nevertheless, the Browning Arms Company can assume no responsibility for incidents which occur through use of cartridges of non-standard dimension or those developing excessive pressures.

GENERAL OPERATION

Your new Browning is a recoil operated, semi-automatic pistol. With the chamber and magazine loaded and the safety in the "off safe", or "fire" position, the pistol will fire a single round with each successive pull of the trigger until the magazine and chamber are empty. The slide of this pistol is designed to stay open after the last cartridge has been fired.

SAFETY AND DRY FIRE MECHANISM

The Medalist pistol is equipped with a positive type manual safety located on the left side of the frame, just above the normal position of the thumb when the pistol is gripped. When the safety is pushed up into the notch of the slide, it locks the slide in its closed position and solidly locks the sear into the hammer notch (Fig. 1). It is important to remember that a cartridge in the chamber can be fired after the magazine has been removed so always check the chamber to be certain a live cartridge is not present.

An exclusive DRY-FIRE mechanism is integral with the manual thumb safety. With the safety latch in the rearward position, it acts solely as a manual safety. In its forward position, however, the safety secures the ham-

2

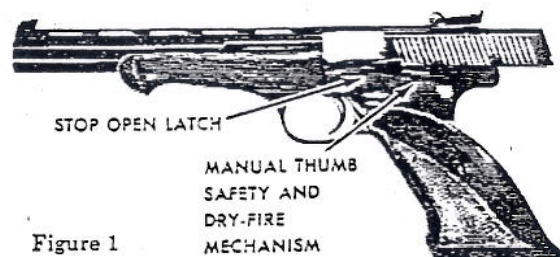


Figure 1

mer fall with each pull of the trigger. A slight downward push on the safety latch after each trigger release recocks the hammer. Thus a shooter may dry fire with ease as long as desired. Trigger let off is identical to actual firing. The firing pin remains inert; mechanical parts are unburdened by extensive practice; recocking is effortless and not disturbing to aim. The pistol is on "full safe" throughout a practice session.

To operate the DRY-FIRE mechanism:

1. Carefully unload the pistol, both chamber and magazine.
2. Cock the pistol by pulling the slide rearward and then releasing to its forward position by pressing the stop open latch.
3. Place the ball of the thumb against the rear of the safety latch and push forward in line with the exact angle of the latch (i.e., push forward and slightly upward at the same time). The safety latch will move forward about 5/32 of an inch.

4. The pistol is now ready to dry fire. After each pull of the trigger, merely apply a slight downward pressure on the top of the safety latch and the pistol is recocked for the next pull of the trigger.
5. To take the pistol off dry fire, cock the pistol by pressing down on the safety latch. Then grasp the ends of the safety latch between thumb and forefinger and pull outward, then upward, then rearward. (Note: Practically no movement will be apparent in the outward motion.) This procedure will return the safety latch to its normal position. The technique of taking the safety latch off the dry fire position is purposely not easy for an inexperienced person in order to increase the integral safety feature of this mechanism. However, once the technique is learned the operation is very easy to perform.

Note: This DRY-FIRE mechanism is an exceptional safety device when the pistol is not in use. With the safety latch in dry-fire position the hammer is inoperative. To move the safety latch from dry-fire position to its normal off-safe position would be a very difficult maneuver for a child, or for someone who was not familiar with the pistol. Please remember, however, that upon returning the safety latch from its dry-fire position to its normal position the pistol is cocked and ready to fire and should be accorded normal safe usage procedures.

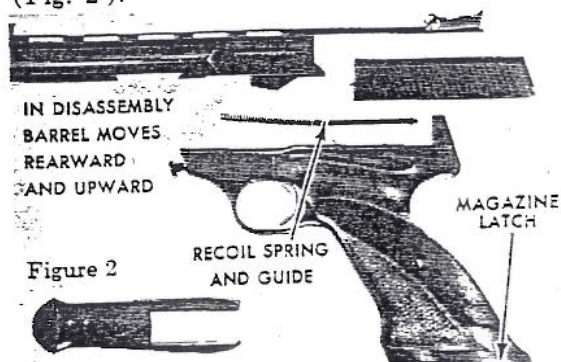
The stop open latch is an additional safety feature. The loaded pistol cannot be fired

4

with the slide locked in its rearward position. Also, since the slide stays open automatically after the last shot is fired, it is a signal that the gun is empty.

LOADING AND FIRING

After putting the thumb safety in the "on safe" position, press the magazine latch at the bottom of the pistol grip to the rear and remove the magazine. Insert the cartridges into the magazine by pushing them down and sliding them rearward with your thumb. The magazine will hold up to 10 cartridges. Insert the loaded magazine into the grip, being certain that the magazine is pressed completely in until retained by the magazine latch (Fig. 2).



To load the chamber, move the thumb safety to the "off safe" position and pull the action slide completely back. Release the slide which will move forward under spring pressure

and feed the first cartridge from the magazine into the barrel chamber. The pistol is now ready for firing. The slide may be locked in the rearward position during the cocking and loading procedure by pushing up on the stop open latch located on the left side of the frame just forward of the manual safety (Fig. 3).



Figure 3

Release the slide by pressing the stop open latch down with your thumb and the slide will move forward and feed the first cartridge into the chamber.

After pulling the trigger and thus firing the cartridge, the pistol automatically ejects the fired cartridge and feeds a fresh cartridge from the magazine into the chamber ready for a second shot. Thus the shooter may fire the pistol until the magazine is empty merely by pulling the trigger for each shot. After the last shot is fired, the stop open latch automatically holds the slide in its open or rearward position, which is a further convenience to re-loading.

CAUTION: You will have observed by cocking the pistol the slide moves rearward about one inch past the rear of the frame. In shooting, neither hand should be in a position where it could be hit by the slide in its rear-

6

ward movement nor should unorthodox sighting methods be used where the pistol is held close to the eye.

UNLOADING THE PISTOL

Remove the magazine from the grip of the pistol and slowly pull rearward on the slide to extract and eject a live cartridge from the barrel chamber. Inspect the action and chamber to be sure that a live cartridge is not remaining in the pistol. The stop open latch does not operate with the magazine removed unless the slide is locked into its rearward position manually or unless the magazine is removed after the last shot is fired, in which event the slide has already been locked rearward automatically. The remaining cartridges in the magazine can now be stripped from the magazine with the thumb.

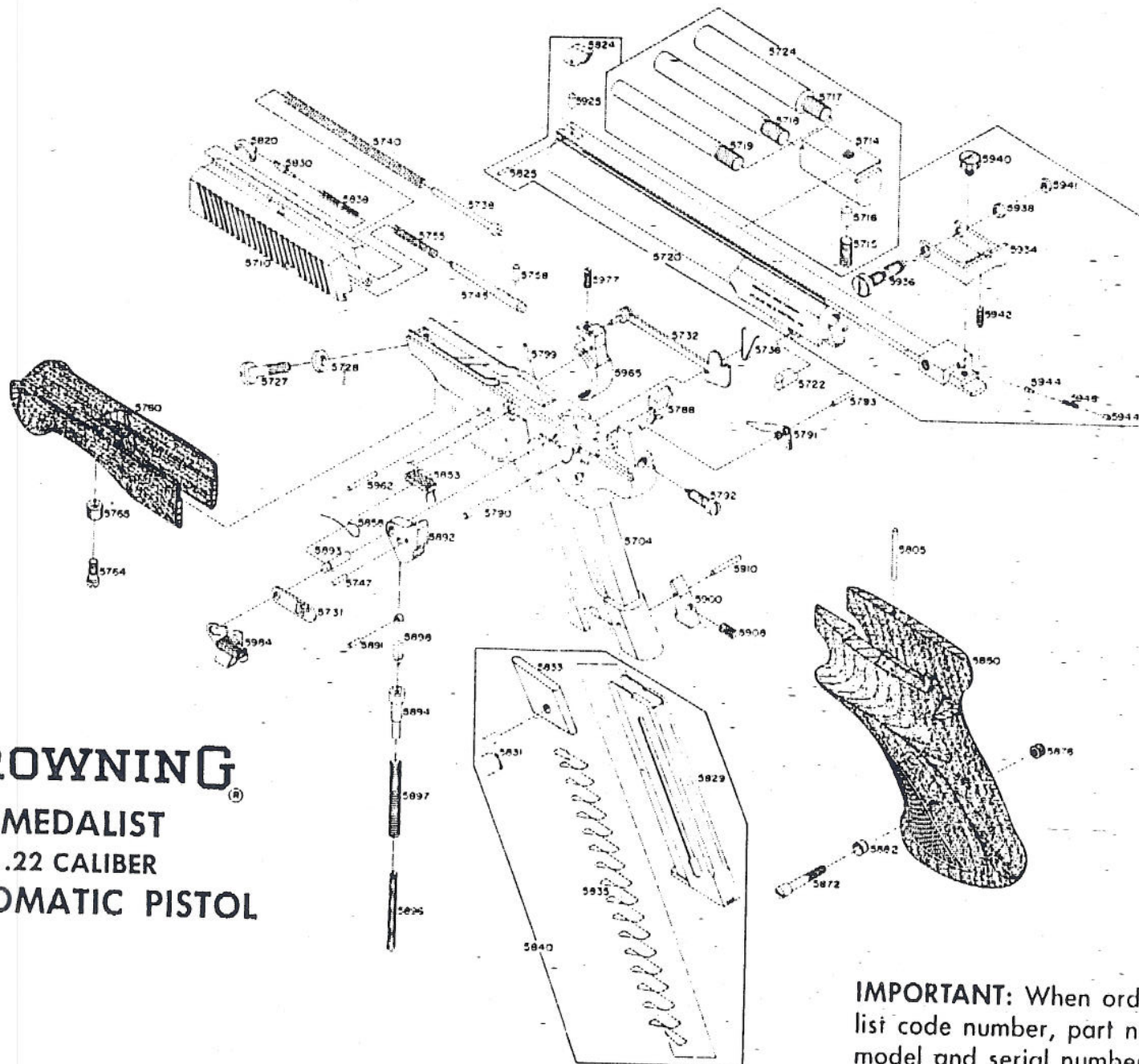
SIGHTS

The Medalist pistol is equipped with a stationary, recoil proof, micrometer rear sight that remains in perfect alignment with the non-glare removable front blade sight. The micrometer rear sight is click adjustable for both horizontal and vertical correction.

1. To move point of impact to the right, turn the coin slotted screw located on the left side of the rear sight in a clockwise direction. To move point of impact to the left, turn this same screw in a counter-clockwise direction (Fig. 4).

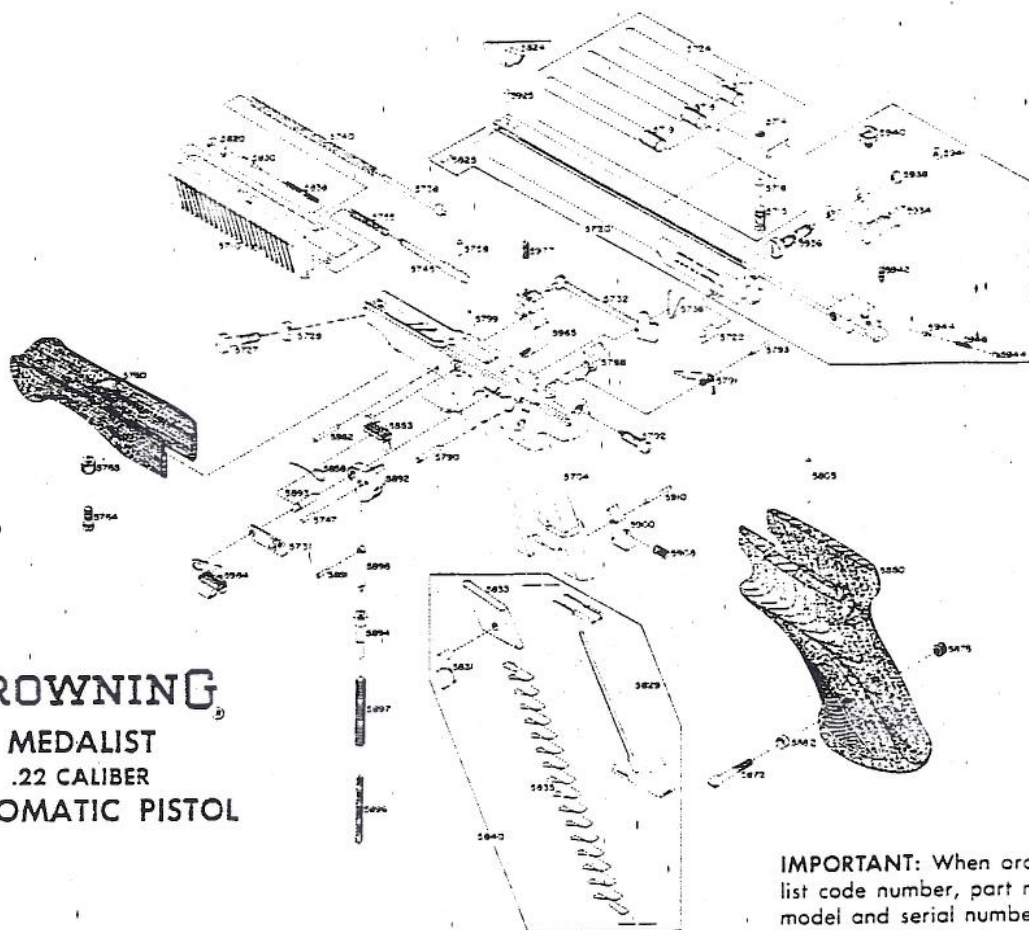
Continued on page 11

BROWNING®
MEDALIST
.22 CALIBER
AUTOMATIC PISTOL



IMPORTANT: When ordering parts,
list code number, part name,
model and serial number.

BROWNING **MEDALIST** **.22 CALIBER** **AUTOMATIC PISTOL**



IMPORTANT: When ordering parts, list code number, part name, model and serial number.

8

9

.22 CALIBER MEDALIST PISTOL PARTS LIST

Code Number	Name	Code Number	Name
5704	Frame — with Ejector	5825	Sight blade—retaining pin—front
5710	Slide	5829	Magazine body
5711	Barrel with Front Sight and Rear Sight Assem. Complete 4-1/2"	5831	Magazine button
5713	Barrel with Front Sight and Rear Sight Assem. Complete 6-3/4"	5833	Magazine follower
5720	Barrel with Front Sight and Rear Sight Assem. Complete with Ventilated Rib	5835	Magazine spring
5721	Barrel Medalist International 5.9"	5840	Magazine complete
5722	Barrel guide pin	5849	Grip Medalist International
5714	Counterweight Support — 2.41 oz.	5850	Grip—Wood—Right Hand Target
5715	Counterweight Support Screw	5851	Grip—Wood—Left Hand Target
5716	Counterweight Support Bushing	5872	Grip screw
5717	Counterweight 2.52 oz.	5853	Stop open latch
5718	Counterweight 1.79 oz.	5858	Stop open latch spring
5719	Counterweight .94 oz.	5876	Grip escutcheon threaded
5724	Counterweight Support and Weights (Complete Set)	5882	Grip escutcheon unthreaded
5727	Barrel mounting screw	5891	Hammer link pin
5728	Barrel mounting screw washer	5898	Hammer link
5731	Click plate	5892	Hammer
5732	Disconnecter	5893	Hammer pin
5736	Disconnecter Spring	5894	Main spring plunger
5738	Recoil spring guide	5896	Main spring—inner
5740	Recoil spring	5897	Main spring—outer
5745	Firing pin	5900	Magazine latch
5747	Fire pin—for dry firing	5908	Magazine latch spring
5755	Firing pin spring	5910	Magazine latch pin
5758	Firing pin retaining pin	5924	Sight assembly complete with rib and front sight
5760	Forearm	5925	Ventilated Rib retaining pin
5764	Forearm screw	5934	Sight aperture—rear
5765	Forearm screw escutcheon	5936	Sight adjusting screw—rear—windage
5788	Sear	5938	Sight adjusting bushing—rear—windage
5790	Sear pin	5941	Sight adjusting washer—rear—windage
5791	Sear spring	5940	Sight adjusting screw—rear—elevation
5793	Sear spring pin	5942	Sight tension spring—elevation
5799	Ejector	5944	Sight adjusting screw follower—windage or elevation
5805	Ejector deflection pin	5946	Sight adjusting screw follower spring—windage & elevation
5820	Extractor	5965	Trigger—Gold Plated—with Backlash screw
5838	Extractor spring	5962	Trigger pin
5830	Extractor plunger	5977	Trigger Backlash adjustment screw
5824	Sight blade—front	5792	Trigger Pull adjustment screw
		5984	Safety

10

BROWNING

We are proud that you have chosen a Browning. In its manufacture we have endeavored to incorporate the very finest in materials and craftsmanship, and with just reasonable care this gun should provide you with many years of pleasure and dependable service. If, by any chance, you have any observations to make regarding its performance or appearance, we hope you will write us immediately.

We would also like to know more about you as a Browning owner and would be grateful if you could take but a moment to complete and return the registration card found on the inside back cover.

Thank you.

BROWNING

BROWNING New Gun Owner's Record

Keep this record for future reference

Browning Model.....
 Serial Number.....
 Gauge or Caliber.....
 Purchase Price.....
 Purchased From.....
 Date of Purchase.....
 Important: Please fill out and mail the Registration Card at the back of the booklet.

BROWNING

Route #1, Morgan, Utah 34050

Distributed in Canada by: Browning Arms Co. of Canada, Ltd.

Important: Do not move the horizontal or windage screw more than necessary for normal sighting adjustment. It is especially important that it not be unduly loosened (turned counter-clockwise) and should never be removed since it is semi-permanently assembled to the rib. Such an extreme and unnecessary procedure would contribute to less precision in this carefully calibrated mechanism.

2. To raise the point of impact, turn the coin slotted elevation screw located at the top of the rear sight in a counter-clockwise direction. To lower the point of impact, turn this screw in a clockwise direction (Fig. 4). Should you

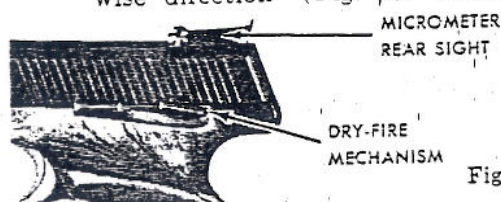


Figure 4

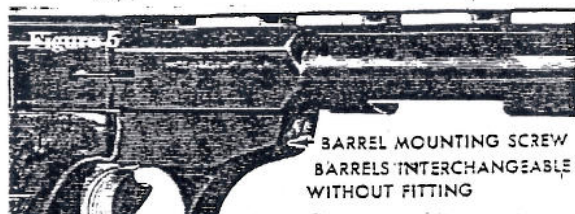
find it necessary to remove the elevation screw, which is unlikely, caution should be taken to prevent loss of the click adjustment plunger and plunger spring which bear against the screw head.

DISASSEMBLY

1. Remove the magazine and unload the pistol as described previously.
2. Loosen the forearm screw and remove the forearm.
3. Located under the barrel on the front of the frame is a coin slotted barrel mounting screw. Using a screwdriver

11

or a dime, loosen this screw until it becomes disengaged from the barrel (Fig. 5).



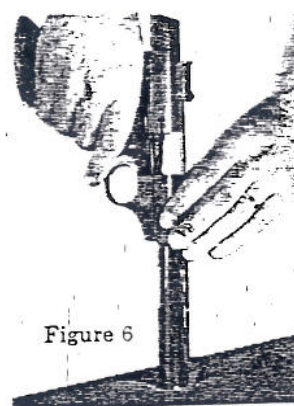
4. Pull the slide rearward and lock open with the stop open latch. Tap the muzzle of the barrel on a padded surface to loosen it from its locked position (Fig. 6).
5. Slide the barrel rearward and upward to separate it from the frame (Fig. 2, page 5).
6. Release the slide and allow it to move slowly forward and off the front of the frame, being careful not to lose control of the recoil spring (Fig. 2, page 5).

This is sufficient disassembly for all practical cleaning and lubricating required. Further disassembly is recommended only for competent gunsmiths or the factory repair department.

REASSEMBLY

1. Replace the slide on the guide rails of the frame and push rearward until the nib on the end of the recoil spring guide can be placed in the hole in the rear part of the frame (Fig. 2, page 5). Then continue to push the slide as far

12



rearward as it will go and lock in this rearward position with the stop open latch.

2. Place the barrel on the frame so that the barrel guide pin aligns with the barrel guide pin recesses in the frame. Pull the barrel forward into position on the frame and allow the slide to move forward to its closed position.
3. Secure the barrel to the frame by tightening the barrel mounting screw.

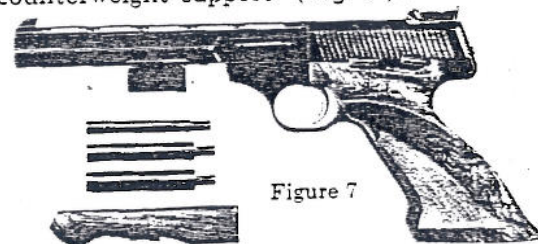
Caution: Do not apply maximum pressure when tightening the barrel mounting screw. This should be tightened to just a snug fit. The barrel mounting system is a new patented "V-WAY-WEDGE" locking system, which locks the barrel into tight alignment and prevents the slightest instability.

4. Replace the forearm and tighten forearm screw.
5. Replace the magazine.

13

COUNTERWEIGHTS

The Medalist comes with three separate counterweights weighing 2.52 ounces, 1.79 ounces, and .94 ounces. The counterweight support weighs 2.41 ounces. To install the counterweight system, first loosen the forearm screw and remove the forearm. Slide the counterweight support into the dovetail slot in the bottom of the barrel, with the counterweight screw hole toward the muzzle, and tighten the counterweight support screw to secure into place. The desired counterweight can then be selected and screwed into the counterweight support (Fig. 7).



NOTE: The Medalist International Does Not Have Counterweights.

TRIGGER PULL ADJUSTMENT

The adjusting screw to regulate the trigger pull is located on the rear face of the frame. Turning the screw in a counter-clockwise direction lightens the trigger pull. When the maximum reduction of trigger pull has been effected, the screw will turn no further. Do not try to force the screw beyond this point.

14

The screw is intentionally locked in assembly and should be removed only by a competent gunsmith.

The screw is turned in a clockwise direction to increase the trigger pull. Trigger pull may be increased as desired. The screw head eventually bottoms against the recess in the frame. This determines the maximum trigger pull.

TRIGGER BACKLASH ADJUSTMENT

The adjusting screw to regulate trigger backlash is located in the top surface of the trigger (Fig. 8). This screw is reached by

Figure 8



first removing the barrel of this pistol. Leave the slide locked in the rearward position. The adjusting screw can then be reached with a small screwdriver through the top of the frame. Turning the screw clockwise decreases backlash. Beyond a certain point, backlash can be reduced no more and further tightening of the backlash screw will only stiffen trigger pull, ultimately causing the trigger to become inoperative.

SHELL DEFLECTOR

The shell deflector is the small pin located at the top of the grip on the right hand side. This deflector is designed to eject the spent cartridge case in a forward direction rather

15

than at an angle which could interfere with another shooter when on the target range. The deflector is a friction fit pin and may be removed easily when not necessary as a further convenience to the owner.

CLEANING

The slide assembly may be cleaned with any good gun cleaning solvent or light gun oil such as Browning Liquid Gunsmith and Gun Oil. Now dry with a clean cloth, or preferably blow dry with air pressure, if available.

The barrel may be cleaned with a powder solvent, if and as necessary, but ordinarily a light lubricating oil will suffice for this purpose. When cleaning the bore of the Medalist, always enter the cleaning rod from the chamber end of the barrel. Use a small brush to remove dirt or other foreign matter from other parts of the action. Lubricate the pistol with a good light gun oil. All moving parts should be occasionally lubricated. Use oil sparingly; a very light film is sufficient. Browning Gun Oil is ideally suited for this purpose.

The magazine should be cleaned after every 1,000 to 1,500 rounds for best operation, since a certain amount of lubricant and dirt will gradually collect in this mechanism. Place the magazine in a good gun cleaning solvent and agitate to loosen and remove grease and dirt. While the magazine is still submerged, also pull the magazine follower back and forth a few times. Shake all excess solvent from the magazine and dry with a cloth, or preferably blow dry with air pressure, if available.

Caution: Most solvents are highly inflammable. Appropriate safety measures should be practiced when working with solvents.

SERIAL NUMBER: The serial number of your pistol can be found stamped on the front of the pistol grip portion of the frame.

SPECIFICATIONS

PISTOL	Medalist	Medalist Int.
Caliber	.22 Long Rifle	.22 Long Rifle
Capacity of Magazine	10 cartridges	10 cartridges
Over-all length	11-15 1/16 inches	10-15 1/16 inches
Length of barrel	6-3 4 inches	5-9 10 inches
Height of Pistol	5-3 4 inches	5-1 2 inches
Width of Pistol	1-5 1/16 inches	1-5 1/16 inches
No. of Rifling Grooves	6 Grooves	6 Grooves
Twist of Rifling	Right Hand	Right Hand
Weight of Pistol	46 oz.	42 oz.
Sights	1-3" wide removable Front; Windage & Elevation Adjustment Rear	1-3" wide removable Front; Windage & Elevation Adjustment Rear
Sight radius	9-5 9 inches	8-6 10 inches

Discharging firearms in poorly ventilated areas, cleaning firearms, or handling ammunition may result in exposure to LEAD and other substances known to cause birth defects, reproductive harm and other serious physical injury. Have adequate ventilation at all times. Wash hands thoroughly after exposure.

 **BROWNING.**

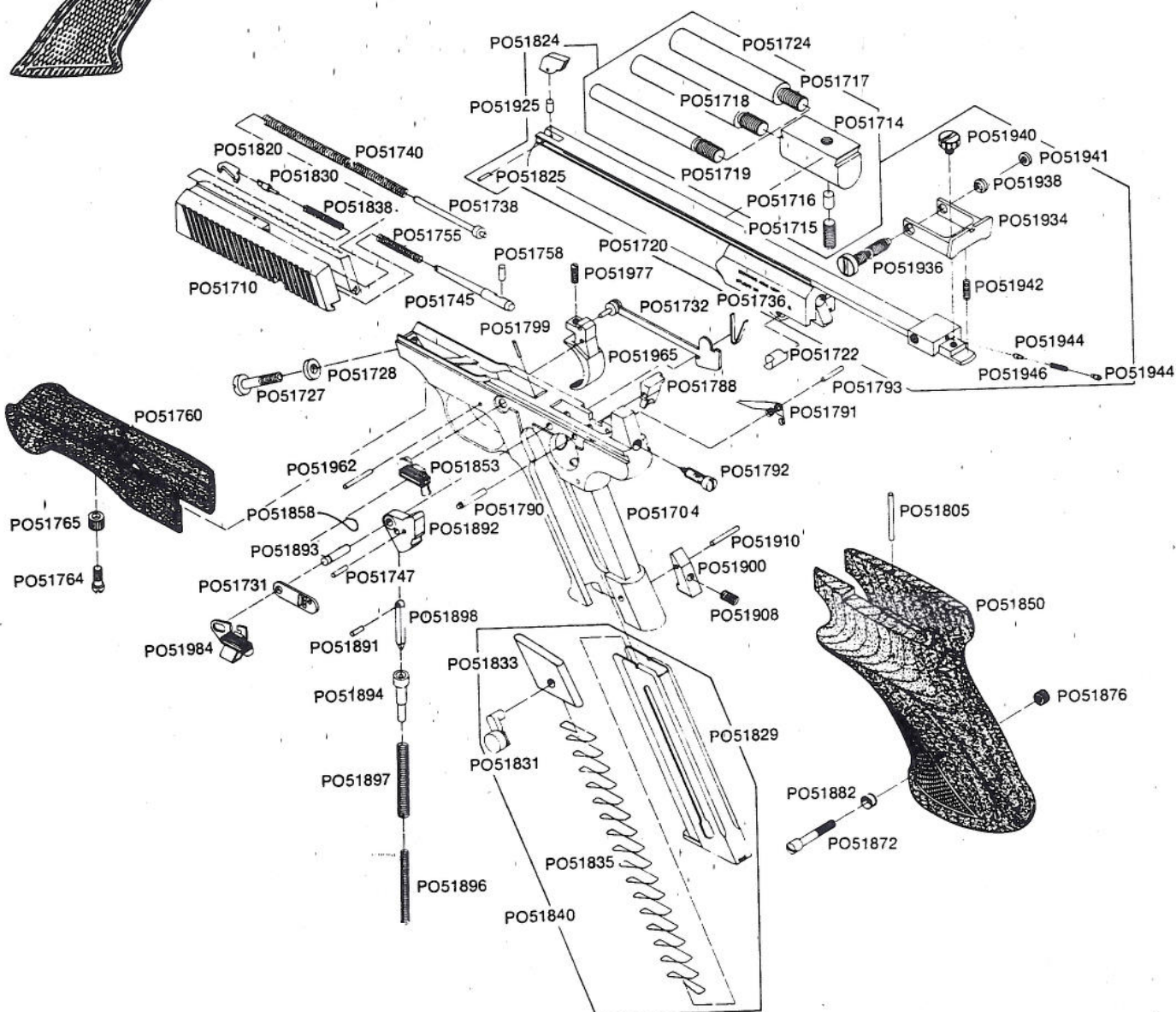
One Browning Place
Morgan, UT 84050-9319
Phone: (801) 876-2711
Fax: (801) 876-3331

Prices F.O.B. point of shipment—subject to change without notice. Minimum billing for parts order \$2.00.
IMPORTANT—When ordering, list Code Number, Part Name, Gun Gauge/Caliber and Serial Number.
 Prices Effective April 1, 1980.

CODE NO.	PART NAME	SUGGESTED RETAIL	CODE NO.	PART NAME	SUGGESTED RETAIL
PO51710	Slide	N-C-M \$42.50	PO51850	Grip—Wood—Righthand	
PO51711	Barrel with Front Sight and Rear Sight Assembly Complete 4½"	N-C 73.50	PO51851	Grip—Wood—Left-hand Target	M 112.50
PO51713	Barrel with Front Sight and Rear Sight Assem. Complete 6¾"	N-C 73.50	PO51852	Stop Open Latch	C 4.40
PO51720	Barrel with Front Sight and Rear Sight Assem. Complete with Ventilated Rib	M 110.00	PO51853	Stop Open Latch	M 4.40
PO51721	Barrel Medalist International 5.9"	M 126.00	PO51854	Grip—Novadur—Plastic	N 9.25
PO51722	Barrel Guide Pin	N-C-M 1.60	PO51858	Stop Open Latch Spring	C-M .50
PO51714	Counterweight Support— 2.41 oz.	M 8.50	PO51860	Grip—Wood	C 57.50
PO51715	Counterweight Support Screw	M .60	PO51868	Grip Screw	N .95
PO51716	Counterweight Support Bushing	M .35	PO51870	Grip Screw	C .95
PO51717	Counterweight 2.52 oz.	M 2.10	PO51872	Grip Screw	M 1.45
PO51718	Counterweight 1.79 oz.	M 2.10	PO51874	Grip Escutcheon Threaded	N-C .95
PO51719	Counterweight .94 oz.	M 2.10	PO51876	Grip Escutcheon Threaded	M .95
PO51724	Counterweight Support and Weights (Complete Set)	M 15.75	PO51880	Grip Escutcheon Unthreaded	N-C .90
PO51726	Barrel Mounting Screw	N-C 1.85	PO51882	Grip Escutcheon Unthreaded	M .90
PO51727	Barrel Mounting Screw	M 1.85	PO51891	Hammer Link Pin	N-C-M .45
PO51728	Barrel Mounting Screw Washer	N-C-M .45	PO51898	Hammer Link	N-C-M 2.00
PO51730	Click Plate	N 3.30	*PO51892	Hammer	N-C-M 10.90
PO51731	Click Plate	C-M 3.65	PO51893	Hammer Pin	C-M .55
PO51732	Disconnecter	N-C-M 4.70	PO51895	Hammer Pin	N .55
PO51736	Disconnecter Spring	N-C-M .80	PO51894	Main Spring Plunger	N-C-M .95
PO51738	Recoil Spring Guide	N-C-M .95	PO51896	Main Spring—Inner	N-C-M 1.25
PO51740	Recoil Spring	N-C-M .75	PO51897	Main Spring—Outer	N-C-M .75
PO51745	Firing Pin	N-C-M 3.10	PO51900	Magazine Latch	N-C-M .75
PO51747	Fire Pin—For Dry Firing	M .55	PO51908	Magazine Latch Spring	N-C-M .75
PO51755	Firing Pin Spring	N-C-M .60	PO51910	Magazine Latch Pin	N-C-M .45
PO51758	Firing Pin Retaining Pin	N-C-M .45	PO51921	Sight Assembly Rear— Complete	N-C 25.00
PO51760	Forearm	M 43.10	PO51924	Sight Assembly Complete with Rib and Front Sight	M 44.25
PO51764	Forearm Screw	M 1.20	PO51925	Ventilated Rib Retaining Pin	M .45
PO51765	Forearm Screw Escutcheon	M .45	PO51927	Sight Base—Rear	N-C 14.25
*PO51788	Sear	N-C-M 7.25	PO51931	Sight Base Mounting Screw—Rear	N-C 1.00
PO51790	Sear Pin	N-C-M .60	PO51933	Sight Aperture—Rear	N-C 5.30
PO51791	Sear Spring	C-M 12.90	PO51934	Sight Aperture—Rear	M 10.90
PO51794	Sear Spring	N 2.35	PO51935	Sight Adjusting Screw— Rear—Windage	N-C 2.25
PO51793	Sear Spring Pin	C-M .45	PO51936	Sight Adjusting Screw— Rear—Windage	M 1.85
PO51799	Ejector	N-C-M .50	PO51938	Sight Adjusting Bushing— Rear—Windage	M .60
PO51805	Ejector Deflection Pin	M .50	PO51941	Sight Adjusting Washer— Rear—Windage	M .45
PO51820	Extractor	N-C-M 2.70	PO51939	Sight Adjusting Screw— Rear—Elevation	N-C .75
PO51838	Extractor Spring	N-C-M 1.25	PO51940	Sight Adjusting Screw— Rear—Elevation	M 1.70
PO51830	Extractor Plunger	N-C-M .95	PO51942	Sight Tension Spring—Elevation	M .45
PO51821	Sight Blade—Front— Old Style	N-C 3.80	PO51944	Sight Adjusting Screw Follower —Windage & Elevation	M .60
PO51824	Sight Blade—Front	M 3.80	PO51946	Sight Adjusting Screw Follower Spring—Windage or Elevation	M .60
PO51825	Sight Blade—Retaining Pin—Front	M .45	*PO51970	Trigger—Blued	N 10.50
PO51826	Sight Blade—Front New Type	N-C 4.20	*PO51965	Trigger—Gold Plated—with Backlash Screw	C-M 15.00
PO51827	Sight Retaining Pin	N-C .45	PO51962	Trigger Pin	N-C-M .45
PO51828	Sight Ramp—Front	N-C 4.85	PO51977	Trigger Backlash Adjustment Screw	C-M .90
PO51829	Magazine Body	N-C-M 22.70	PO51792	Trigger Pull Adjustment Screw	C-M 1.55
PO51831	Magazine Button	N-C-M 2.50	PO51980	Safety	N-C 4.20
PO51833	Magazine Follower	N-C-M 4.30	PO51984	Safety	M 4.20
PO51835	Magazine Spring	N-C-M 1.50			
PO51848	Grip—Wood—Medalist International Righthand	M 87.50			
PO51849	Grip—Wood—Medalist International Left-hand	M 87.50			

*Indicates part must be fitted by Browning Service Department or qualified gunsmiths.
 NOTE: Unless otherwise indicated, part is interchangeable between gauges/calibers.
 See page 48 for price of complete magazine. N—Nomad C—Challenger M—Medalist.

†Part may be purchased only by holders of current valid Federal Firearms Licenses.



Schematic is provided for parts identification only and should not be used as a guide to assemble guns.



BROWNING®

Western Gun Parts and Commemorative Arms Co., who are referenced below, have purchased our remaining parts inventory of this firearm. All inquiries concerning parts should be directed to them.

We apologize for any inconvenience that this may have caused and thank you for your patience.

Parts: Western Gun Parts, Ltd.
17324 106 A Avenue
Edmonton, Alberta T5S 1E6
Canada
(780) 489-5711

Commemorative Arms Company
Attention: Nicholas J. Riggio
5149 Daggett Avenue
St. Louis, Missouri 63110
(314) 771-5700

Service: Alhman's Custom Gun Shop
9525 W 230th Street
Morristown, Minnesota 55052
(507) 685-4243 or 4244

Art's Gun Shop
6008 Highway Y
Hillsboro, Missouri 63050
(636) 944-3630

Walker Arms Company
499 County Road 820
Selma, Alabama 36701
(334) 872-6231

You Are Responsible For Firearms Safety

As a gun owner, you accept a set of demanding responsibilities. How seriously you take these responsibilities can be the difference between life and death.

THERE IS NO EXCUSE FOR CARELESS OR ABUSIVE HANDLING OF ANY FIREARM. AT ALL TIMES HANDLE YOUR HANDGUN AND ANY OTHER FIREARM WITH INTENSE RESPECT FOR ITS POWER AND POTENTIAL DANGER. PLEASE READ AND UNDERSTAND THE CAUTIONS AND PROPER HANDLING PROCEDURES OUTLINED IN THIS BOOKLET BEFORE USING YOUR NEW FIREARM.

1 ALWAYS KEEP THE MUZZLE OF YOUR HANDGUN POINTED IN A SAFE DIRECTION.

Never point any firearm at anything you do not intend to shoot. Be extremely alert and aware of all persons and property within the range of your ammunition.

2 NEVER RELY TOTALLY ON YOUR FIREARM'S MECHANICAL "SAFETY" DEVICE.

The word "safety" describes a gun's blocking or disengaging mechanism for the trigger, sear, hammer and/or firing pin. Although mechanical devices place pistol in a SAFER status, no guarantee can be made that the gun will not fire even if the "safety" is on the "on safe" position.

LIKE ANY MECHANICAL DEVICE, A "SAFETY" CAN SOMETIMES FAIL; IT CAN BE JARRED OR INADVERTENTLY MANIPULATED INTO AN UNSAFE CONDITION. Mechanical "safeties" merely aid safe gun handling and are no excuse for pointing your guns muzzle in an unsafe direction. While it is a good idea to "test" your guns mechanical "safeties" periodically for proper function, ***NEVER TEST IT WHILE YOUR GUN IS LOADED OR POINTED IN AN UNSAFE DIRECTION.***

Safe gun handling does not stop with your guns mechanical "safety" devices – it starts there. Always treat this pistol with the respect due a loaded, ready-to-fire firearm.

3 DO NOT CARRY YOUR HANDGUN WITH A ROUND IN THE CHAMBER.

For good safety practice, it is recommended that a round not be chambered until immediately before your pistol is to be fired.

4 WHENEVER YOU HANDLE YOUR HANDGUN, OR HAND IT TO SOMEONE, MAKE SURE IT IS COMPLETELY UNLOADED.

To fully unload your handgun, you must first remove the magazine, open and lock the slide rearward, and visually inspect the chamber to be certain it does not contain a cartridge. It is vital that you remove the magazine from your pistol so a cartridge is not automatically chambered when you close the action. Always keep the chamber empty and "safety" in the "on safe" position unless shooting is imminent.

10 *USE THE PROPER AMMUNITION.*

The barrel and action of this pistol have been made with substantial safety margins over the pressures developed by established American commercial loads.

HOWEVER, BROWNING ASSUMES NO LIABILITY FOR ACCIDENTS WHICH OCCUR THROUGH THE USE OF CARTRIDGES OF NON-STANDARD DIMENSIONS OR THAT DEVELOP PRESSURES IN EXCESS OF COMMERICALLY AVAILABLE AMMUNITION THAT HAS BEEN LOADED IN ACCORDANCE WITH STANDARDS ESTABLISHED BY THE SPORTING ARMS AND AMMUNITION MANUFACTURERS INSTITUTE (SAAMI).

EXAMINE EVERY CARTRIDGE YOU PUT IN YOUR FIREARM.

Browning cannot assume any responsibility for the use of unsafe or improper arms and ammunition combinations. It is your responsibility to read and heed all warnings in your instruction manual and on ammunition boxes.

11 *DISCHARGING FIREARMS IN POORLY VENTILATED AREAS, CLEANING FIREARMS, OR HANDLING AMMUNITION MAY RESULT IN EXPOSURE TO LEAD AND OTHER SUBSTANCES KNOWN TO CAUSE BIRTH DEFECTS, REPRODUCTIVE HARM AND OTHER SERIOUS PHYSICAL INJURY. HAVE ADEQUATE VENTILATION AT ALL TIMES, WASH HANDS THOROUGHLY AFTER EXPOSURE.*

12 *DO NOT SNAP THE FIRING PIN ON AN EMPTY CHAMBER – THE CHAMBER MAY NOT BE EMPTY!*

Treat every gun with the respect due a loaded gun, even though you are certain the gun is unloaded.

13 *KEEP YOUR FINGERS AWAY FROM THE TRIGGER WHILE UNLOADING AND LOADING – UNTIL YOU ARE READY TO SHOOT.*

14 *BE SURE OF YOUR TARGET AND BACKSTOP.*

Take additional care during low light periods. Know the range of your ammunition. Never shoot at water or hard objects.

15 *DROPPING YOUR HANDGUN WHEN LOADED CAN CAUSE AN ACCIDENTAL DISCHARGE EVEN WITH THE "SAFETY" ON.*

Be extremely careful while hunting or during any shooting activity, to avoid dropping a loaded firearm.

Your firearm is a mechanical device which will not last forever, and as such, is subject to wear and requires periodic inspection, adjustment, and service. Like all Browning firearms, your firearm should be serviced by a Browning Recommended Service Center or by Browning's service facility in Arnold, Missouri.

***BROWNING CANNOT ASSUME ANY RESPONSIBILITY FOR INJURIES
SUFFERED OR CAUSED BY UNAUTHORIZED SERVICING, ALTERATIONS OR
MODIFICATIONS OF BROWNING FIREARMS.***

Read and heed all warnings in your owner's manual, on ammunition boxes and with all accessories that you install on your firearm. It is your responsibility to secure the most up-to-date information on the safe handling procedures for your Browning gun. Browning assumes no liability for incidents which occur when unsafe or improper gun accessories or ammunition combinations are used.

Do not, under any circumstance, alter the trigger, safety or parts of the firing mechanism of this or any other firearm. Failure to obey this warning may result in injury or death to yourself or others.

BE CAREFUL!