

C.I.P.

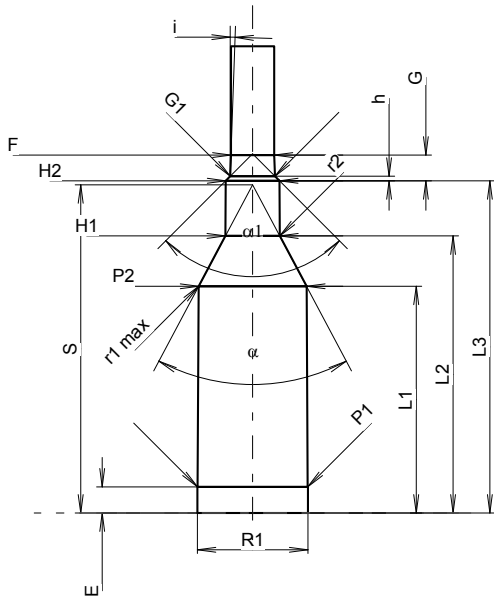
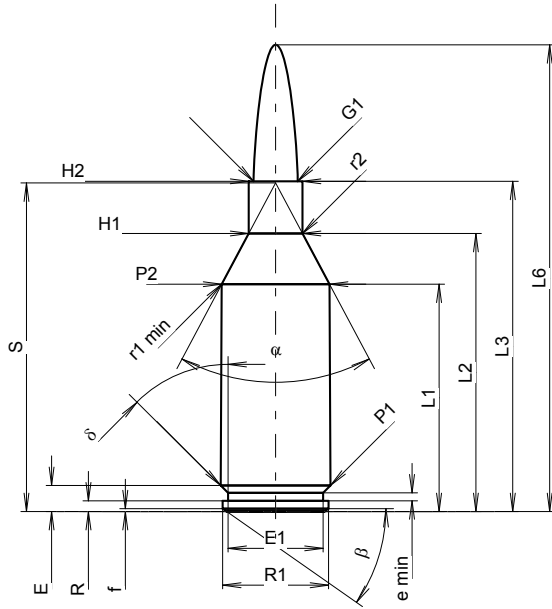
223 Win. Super Short Mag.

Country of Origin: US

TAB. I

Date 04-05-18

Revision 08-09-23



Scale 1.03:1

CARTRIDGE MAXI

Lengths

L1 ¹⁾	=	29.20	-0.20
L2 ¹⁾	=	35.71	-0.20
L3 ¹⁾	=	42.42	
L4	=		
L5	=		
L6	=	59.94	

Case Head

R	=	1.37	
R1	=	13.59	
R3	=		
E	=	3.35	
E1	=	12.19	
e min	=	1.02	
delta	=	45°	
f	=	0.36	
beta	=	35°	

Powder Chamber

P1	=	14.12	
P2 ¹⁾ *	=	13.83	-0.20

Junction Cone

alpha *	=	56°	
S *	=	42.21	
r1 min	=	1.27	
r2	=	3.30	

Collar

H1 *	=	6.91	
H2 ¹⁾	=	6.91	

Projectile

G1 ¹⁾	=	5.70	
G2	=		
F	=		
L3+G ¹⁾	=	45.73	

Pressures (Energies)

Method Transducer

Pmax	=	4400 bar	
PK	=	5060 bar	
PE	=	5500 bar	
M	=	25.00	
EE	=	2600 Joule	

Miscellaneous Dimensions

Fe ³⁾	=	0.10	
delta L	=	0.08	

CHAMBER MINI

Lengths

L1	=	29.12	
L2	=	35.58	
L3 ¹⁾	=	42.67	

Breech

R	=		
R1	=	14.20	
R2	=		
R3	=		
r	=		

Powder Chamber

E	=	3.35	
P1 ¹⁾	=	14.15	
P2 *	=	13.86	

Junction Cone

alpha ¹⁾ *	=	56°	
S *	=	42.15	
r1 max	=	1.27	
r2	=	4.06	

Collar

H1 *	=	6.99	
H2 ¹⁾	=	6.93	

Commencement of Rifling

G1 ¹⁾ *	=	5.75	
G ¹⁾	=	3.31	
alpha 1 *	=	90°	
h	=	0.59	
s	=		
i ¹⁾ *	=	2°	
w	=		

Barrel

F ¹⁾ *	=	5.56	
Z ¹⁾	=	5.69	

Grooves

b	=	2.03	
N	=	6	
u	=	254.00	
Q	=	25.09	mm ²

Dimensions in << mm >>
Dimensions and Tolerances for Proof Barrels
see Appendix CR 1.

Notes: 1) Check for safety reasons
3) Headspace on Shoulder
* Basic dimensions